

# HC99L-UFD 上流式冷熱水機

Upward Flow Hot & Chilled Dispenser



## 產品說明書

INSTRUCTION MANUAL



## 請於安裝水機前仔細閱讀《使用說明書》

請在安裝之前詳細閱讀本說明書，並正確使用水機。

### 安全上注意事項 (請必須遵守)

- 安全注意事項

為防止對消費者及他人的人身安全或財產造成危害，請遵守以下的說明。另外，請詳細閱讀說明書的注意事項，並正確使用本水機。

- 請使用者務必遵守下列事項，以圖示做區分，並說明如下：

- 安裝時

---

不可安裝在潮濕的場所以免造成觸電、火災

---

必須安裝在堅固、水平的地面上。不平穩的場所，可能會造成水機傾倒

---

- 插頭和電線的相關注意事項

---

插頭和電線不能有損毀及不可纏繞電線，防止觸電、漏電、火災

---

必須把插頭單獨插在220V交流電的插座上避免火災發生

---

不可使用延長線或多孔插座避免火災發生

---

清理水機背面時，需把插頭拔掉，並且避免用潮濕的手觸摸插頭避免觸電

---

用乾布定期擦掉插頭上的灰塵，避免火災發生

---

若電源線軟線損壞，為了避免危險，必須通知客戶服務部安排維修。  
請勿自行更換或修理，避免危險

---

- 其他的注意事項

---

熱水溫度很高時，請注意以免燙傷，避免讓小孩觸碰到熱水龍頭的出水口

---

不要觸碰水機背面的散熱板以免造成燙傷

---

在水機送抵後，請先將水機靜置一小時，以使製冷劑穩定運作

---

水機的兩側和後面必須與牆壁四周間隔15厘米以上，水機過熱可能使機器的性能降低及引起火災

---

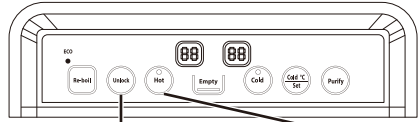
# 如何使用飲水機

## 重要1 兒童安全鎖（使用熱水時）

兒童安全鎖（使用熱水時）為了避免小朋友燙傷，熱水水龍頭均設有安全鎖及防燙按鈕。

操作步驟：

- ① 用手指按熱水防燙按鈕三秒。
- ② 聽到「滴」聲後，馬上用手指按熱水出水按鈕。熱水會自然流出。
- ③ 當杯中裝好適量的水後，把按鈕放開，熱水會停止流出，安全鎖會恢復為上鎖狀態。



熱水防燙按鈕

熱水出水按鈕

※即使在鎖狀態下，熱水滴也可能從熱水龍頭口低落。請務必不要讓小朋友觸碰此處。

## 重要2 定期使用冷水和熱水

冷水按鈕和熱水按鈕都要定期使用，讓水流出。借此可以讓水膽內的水增加迴圈，也可避免水膽的水留置過久。

## 重要3 未使用的桶裝水存放場所

必須存放在通風的場所，並且要避免陽光直射或暖氣、熱爐等地方。

## 重要4 熱水消毒功能及顯示

本機具有熱水消毒功能，請定時按動本機機面的消毒按鈕對飲水機水膽及內部管路進行消毒，確保飲用水衛生安全。

操作方法：

按下消毒按鈕5秒，機器進入消毒模式，在此模式下，加熱和製冷均停止工作，熱水溫度顯示熄滅，冷水溫度顯示冷罐內的即時溫度。同時旁邊的藍色指示燈閃爍。此模式會持續大約8小時左右，然後機器會自動跳出消毒模式進入正常的工作模式。如果在消毒過程中想終止消毒工作，同樣按下消毒按鈕5秒或打開機大門，即可退出消毒模式。

※水機消毒的時候，請勿使用水機。

※請將水機消毒的時間選在晚上小孩和老人休息後進行，謹防消毒模式下冷水龍頭流出熱水燙傷他人。

## 重要5 加熱功能及顯示

當使用者需要熱水時，打開機器背後的紅色加熱開關，機器開始加熱，同時顯示面板上顯示即時的熱水溫度。熱水按鈕旁邊的紅色指示燈開始閃爍，隨著熱罐內熱水溫度的升高並達到設計的溫度時（設計為90°C），機器停止加熱，加熱指示燈變成常亮。當溫度低於設定的保溫溫度時，機器自動進行重新加熱。

該機器設計有再加熱功能，當使用者感覺熱水溫度偏低的時候，可以按一下再加熱按鈕，此時處於保溫狀態下的熱罐將馬上進行再次加熱（再加熱停止溫度為95°C）。

## 重要6 製冷功能及顯示

插上電源線，機器開始製冷，大約在30分鐘左右的時間會為使用者提供低於攝氏10°C的冷水；在機器製冷的時候，顯示面板上會顯示冷水的即時溫度。在本機正常工作的情况下，壓縮機在冷水5°C的時候停止工作，在10°C的時候壓縮機啟動，冷水選擇溫度顯示也為5°C。在此過程中顯示板圖示由下到上依次點亮，歷時為2秒鐘；然後再全滅，歷時0.5秒；如此反復的動態顯示，直到溫度達到設定溫度，然後圖示一直點亮，停止動態顯示。

## 重要7 溫度選擇功能

冷水溫度選擇：本機提供三種不同的冷水溫度，分別為5°C、8°C、12°C，機器預設5°C。每按動冷水溫度選擇按鈕，顯示面板上的冷水溫度顯示會變化一次，當閃爍5次之後便會停止閃爍，並且機器將會在所選定的冷水溫度下工作。

熱水溫度已經設計停止溫度為90°C，熱水溫度不能進行調整。

## 重要8 光控與節能

本機器帶有光控節能裝置，當使用者晚上下班或睡覺的時候，關閉電燈的情況下，機器根據光感裝置自動判斷環境的光照度來判斷是否停止機器的加熱系統，從而達到節能的效果。同時機器的後面配有光控節能關閉開關和光控感光等級調節按鈕。

## 使用時的注意事項

### • 其他的注意事項

本水機只能在室內使用

請勿放置於陽光直射或淋雨的場所，否則可能造成性能降低、漏電

不要放置在火爐等熱源的旁邊可能會造成及其變形、性能降低


第一次使用時，先插上機器的電源線，按熱水出水按鈕，待出水口有水流後，方可打開制熱開關，否則可能造成故障

桶裝水掉落地面，可能造成桶身破裂和使飲水機漏水

水機上面不可放置物品，以免造成水機傾倒

- 請平穩放置水機於平面上
- 倘若需要安裝於其他有別於上述之放置要求，請致電本公司熱線安排公司認可人員進行安裝，客戶須另購安裝之配件
- 本水機適合於家居或辦公室使用，放置水機須離牆四周最少15厘米，以免影響排風
- 不要安裝於有水濺到之處，應安裝水機於乾燥蔭涼或通風之處，並遠離易燃及易爆物品
- 切勿改裝電源插頭或使用拖板接駁電源，避免因過熱而引起火災危險
- 當水機電源插頭被拔掉或電源被關掉時，需等待至少五分鐘後才可再次接上電源及啟動
- 不要把電源插頭直接插入或拔出電源插座來開啓或關掉水機，避免造成危險
- 當水機進行清潔或維修前，應先關掉電源開關，然後拔掉電源插頭，不要將水機放入水中清洗，或用氣體或化學藥劑來擦洗機身
- 清洗水機時，請用乾淨之抹布加上中性清洗劑抹擦，不可用水潑洗
- 切勿使用橡膠容器盛載熱水
- 水機使用後發熱元件表面仍有餘熱，如不適當使用此水機，可能會有受傷的危險。
- 為了防止水機傾倒，使用者需要根據「固定裝置安裝說明」固定水機
- 防傾倒配件安裝工作需要斷電操作。

 **警告：**若電源線受損，請致電本公司熱線安排公司認可人員進行維修

 **警告：**勿讓孩童，老人、行動不便、殘疾、缺乏使用水機經驗或有需要協助人士單獨使用本水機，需有成年人在旁監督指導及協助，避免發生意外。

 **警告：**勿讓孩童耍玩本水機，以免發生危險或造成破壞

 **小心：**避免觸電，請在清洗或檢查水機前切斷電源

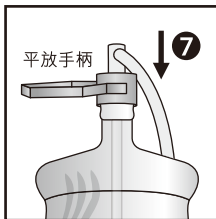
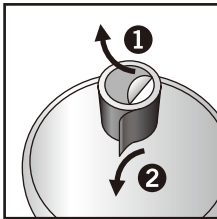
## 如何排空飲水機內部的水

長期外出的時候，請將不鏽鋼吸水管從水桶內拔出，再將水桶移出飲水機，按冷水出水按鈕，將冷罐內的冷水從冷罐裡面排出，再按熱水防燙按鈕和熱水出水按鈕將熱水電磁閥打開。將熱水龍頭裡面的水排出，再打開機器後面的排水閥蓋，取掉排水矽膠塞，此時排水閥將熱罐內的餘水排出。直到沒有水從排水閥流出後，再將排水塞和排水螺母裝好。

 **注意：**排水閥流出的水溫度可能很高，及切勿使用橡膠容器盛載熱水。

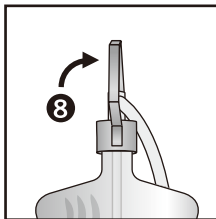
※ 顯示溫度是指水膽內的溫度

## 飲水機更換水樽程序說明



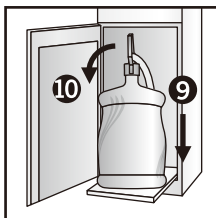
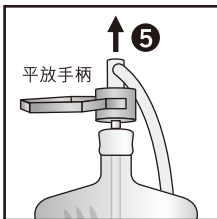
1. 將一支水樽放在水機門旁，並把樽口上的膠紙封條揭開。
2. 把樽口旁邊的包裝撕開。
3. 打開水機正面下方的水櫃門。
4. 小心輕手從水櫃內，把已經飲用完的水樽拉出。

注意：如首次安裝，請將不銹鋼吸水管的膠袋取出



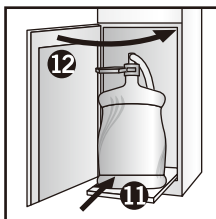
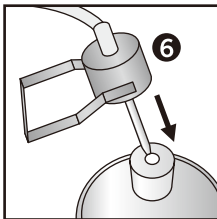
5. 把不鏽鋼吸水管從水樽口向上拉出。

注意：需要把不銹鋼手柄平放才可以拉起



6. 用不鏽鋼吸水管把樽蓋內的活塞蓋推開。(白芯蓋推開)

注意：不用把樽蓋撕走



7. 把手柄平放，並把不鏽鋼吸水管放入。
8. 拉起手柄，並確認已經鎖緊樽蓋。
9. 將水樽提起及把水樽放在水機底盤斜台的邊上。
10. 把手柄平放。
11. 小心將水樽推進水機內。
12. 關上水機正面下方水櫃門，水機內的水泵便自動把水樽內的水泵植入水機。

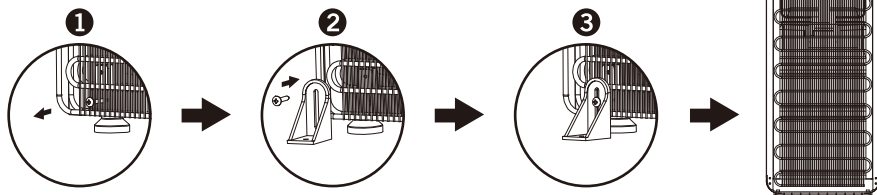
注意：如水櫃門未能完全關上，水機將不會運作(停止制熱及不會抽水)水泵運行約50秒將自動停止，如缺水顯示燈亮起，此時只需把櫃門打開，再關上，即可再次抽水。

## 固定裝置安裝說明

名稱	固定支架	螺釘、膠塞
數量	2	2

### 安裝說明：

- ① 按圖示將左右下角的螺釘拆下
- ② 拆下機後散熱網左、右下面螺釘，用螺釘將固定支架固定於飲水機的左右下角
- ③ 用螺釘及膠塞將支架固定於飲水機安放的地面或桌面，並保持水機離牆四周至少有15厘米空間距離



## 保養重點

為防止觸電，請先關掉熱水開關，拔掉插頭，然後再進行保養。

※清洗或保養時，請勿將機器直接浸泡於水中，並且禁止直接向機器澆水。

### 冷、熱水龍頭周圍

冷熱水龍頭的周圍請將乾淨的抹布，或是廚房用紙巾稍微沾濕，然後擦掉灰塵。  
(如果污垢情況嚴重，請用酒精類清洗劑來殺菌)

### 機身

請用乾淨的抹布，或是乾毛巾擦去污垢，然後再用濕海綿或是軟布清潔機身。  
(如果污垢情況嚴重，請用中性清洗劑清洗機身)

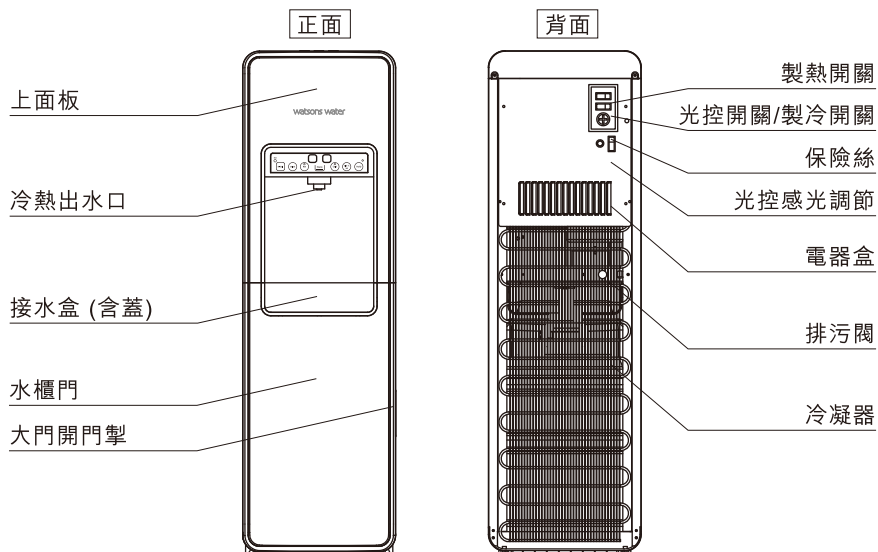
### 接水盒和接水盒蓋

只要把接水盒向前上拉，就能簡單拉出。(請用中性清洗劑清洗，再用清水洗清)

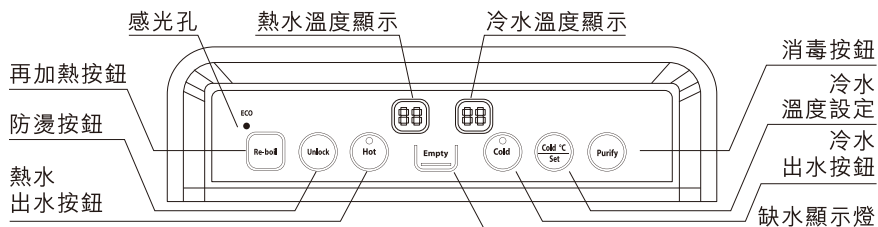
### 背面部分

用吸塵器將附著的灰塵、棉絮除去後，用軟布沾水後扭乾，然後才進行清洗。  
※為了防止燙傷，擦拭前請先拔掉插頭，並靜待一段時間。

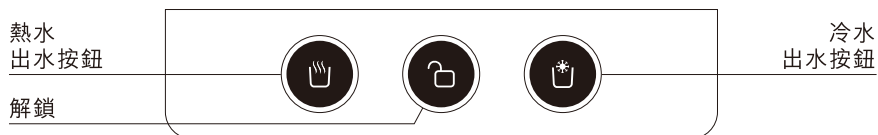
## 各部位名稱與功能



## 水機正面按鈕圖



## 水機頂上按鈕圖



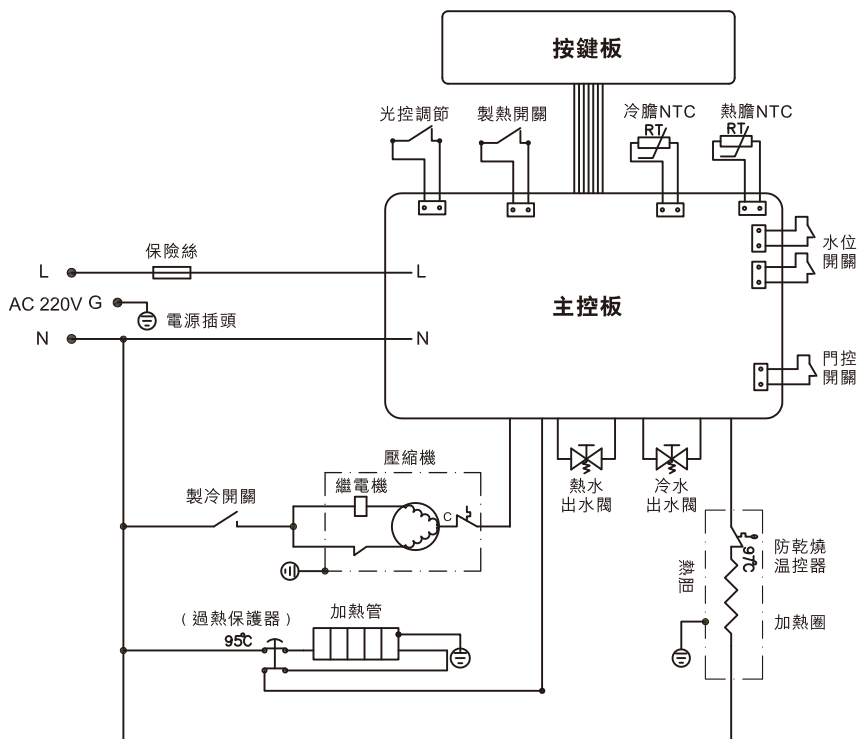
先按開鎖鈕，聽到呖一聲後，再長按冷或熱水按鈕出水。

## 光控節能裝置

本機器帶有光控節能裝置，當用戶晚上下班或睡覺的時候，開關電燈的情況下，機器根據光感裝置自動判斷環境的光照度來判斷是否停止機器的加熱系統，從而達到節能的效果。同時機器的後面配有光控節能關閉開關和光控感光等級調整按鈕。光控感光一共有5個等級可以調節，分別是D1，D2，D3，D4，D5檔，可以感知到的光強度分別是14lx，10.5lx，7lx，3.5lx，0.5lx（此值為大約值）。從D1檔調到D5檔，光感裝置能感知到的光亮度越弱，D5檔對光的敏感度最強，D1檔對光的敏感度最弱。一般建議客戶調到D3，D4檔。

D1對應的是早上，D2對應的是黃昏，D3對應的是陰天室內，D4對應的是室內日光燈，D5對應的是晚上月夜

## 電路圖





## 銘牌



### 注意 Attention

- ① 兒童須由成人陪同方可使用此水機  
Children should be accompanied by adults when using this dispenser
- ② 如需更換蒸餾水水樽或改變水機擺放位置，請參照使用指南指示  
Please follow the instruction manual before replacing water bottle or relocating the dispenser
- ③ 倘遇操作故障，請勿自行修理。請關掉電源並致電熱線安排公司認可人員進行維修  
Should the dispenser encounter technical problems and require maintenance, it must be serviced by the company qualified technician. Please disconnect the power source and call for service

### **HOT & CHILLED WATER DISPENSER** **MODEL: HC99L-UFD**

POWER VOLTGE: 220 V    NET WEIGHT: 19kg  
FREQUENCY: 50Hz    REFRIGERANT: R134a/34g  
TOTAL POWER: 585 W  
HEATING PWER: 500 W    RATED COOLING CURRENT: 0,6 A  
CLIMATIC CLASS: N  
DIMENSIONS: 320 W X 355 D X 1050H mm  
SERIAL NO.: 123456789  
MADE IN CHINA  
DISTRIBUTED BY: watsons water

## 常見故障分析與排除

送修前，請先確認以下的項目。

故障狀況	原因	處理方式
冷水不冷， 且熱水不熱。	<ul style="list-style-type: none"> <li>● 插頭沒有插在插座上。 正面的通電指示燈 (熱水、冷水指示燈) 沒有亮。</li> </ul>	<ul style="list-style-type: none"> <li>● 請將插頭插上插座。</li> </ul>
	<ul style="list-style-type: none"> <li>● 製熱開關沒打開。</li> <li>● 保險絲燒斷。</li> </ul>	<ul style="list-style-type: none"> <li>● 打開製熱開關。</li> <li>● 需要換保險絲， 請聯絡客戶服務部。</li> </ul>
冷水、熱水龍頭 都沒有水流出。 (或是出水量很小) 更換桶裝水後， 水無法流出。	<ul style="list-style-type: none"> <li>● 桶內已經沒有水。</li> <li>● 機內水缸已無足夠水。</li> </ul>	<ul style="list-style-type: none"> <li>● 請更換新的桶裝水。</li> <li>● 請打開水櫃門再關上。 重覆直至缺水顯示燈 不再亮起。</li> </ul>
<p>出現漏水的現象。 ※確定有漏水現象時， 請先把插頭拔掉。</p> <p>水機的周圍 出現漏水。 水從機身內部漏出 (從機身下方滲出) 水從機身背面的 排蓋漏出。</p>	<ul style="list-style-type: none"> <li>● 桶裝水、桶蓋有損傷。 ※請聯絡客戶服務部。</li> </ul>	<ul style="list-style-type: none"> <li>● 桶蓋有漏水現象， 或是桶身有損傷時， 請更換新的桶裝水。</li> </ul>
	<ul style="list-style-type: none"> <li>● 水從機身內部漏出 ※請聯絡客戶服務部。</li> </ul>	<ul style="list-style-type: none"> <li>● 將桶裝水拔出</li> <li>● 從冷水龍頭將水 完全排出 (約2公升)。</li> </ul>
	<ul style="list-style-type: none"> <li>● 排水螺母鬆脫。</li> </ul>	<ul style="list-style-type: none"> <li>● 排水螺母 (黑色) 鬆脫時，請重新扭緊。</li> </ul>

如果有其他疑問，請致電客戶服務熱線2660 6688。

## PLEASE READ THIS INSTRUCTION MANUAL THOROUGHLY BEFORE USING

Please read this instruction manual thoroughly before on-site installing, and use the water dispenser properly.

## SAFETY PRECAUTION

- **Safety Precaution**

In case of any harm do to the body safety and property of the user and others, please obey the following instructions. Besides, please read the precautions thoroughly and use the water dispenser correctly.

- Users have to obey the following issues, distinguished by pictures and illustrated as following:

- **When installing**

---

To avoid electric shock or fire, please not to install the dispenser in wet places

The dispenser must be placed on flat and stable surface. It may fall down when placing on a unstable place

---

- **The relevant matters need to pay attention to plug and power cord**

---

To prevent electric shock, electric leakage and fire, power cord and plug cannot be defected and twisted

---

To avoid fire, 220V AC socket must be plugged separately

---

To avoid accident, do not use extension cord or multi-plug socket

---

Need to unplug when cleaning the back side of the dispenser

---

To avoid electric shock, please not to use wet hand to touch the plug

---

Clean the dust of the plug regularly with dry cloth in order to avoid fire

---

If the power cord is damaged, please call Customer Service Hotline for maintenance and not to replace or repair the dispenser by yourself

---

- **Other matters need to pay attention**

---

To avoid scalding, do not allow children to play with the hot water faucet

---

Don't touch the condenser at the back of water dispenser as high temperature may lead to scald

---

Place the water dispenser for one hour after arrival which can stabilize the refrigerant

---

This dispenser should be placed on leveled surface in indoor environment with at least 15cm surrounding open space behind for ventilation.

---

If the dispenser is overheating, it may affect the performance of the machine and cause fire

---

## NOTES OF OPERATION

### • Other notes

This water dispenser is designed for indoor use only.

Please don't put it under the direct sunlight and rain. Otherwise, it may lead to low performance and electric leakage

Please don't put it besides torch or other heat machine, it may lead to a low performance or deformation

When using it first time, connect the machine to the power supply, press down the hot water tap until water comes out. Switch the heating button on at the back of the machine until the hot water comes out. Otherwise, it may be cause malfunction


The barrel may be broken if bottled water falls down on the floor.

The machine may leak water


Can't put objects on the water dispenser. Otherwise, it may fall down

- Place the water dispenser on a leveled surface
- If the dispenser places other than the above mentioned, please call our customer service hotline for proper installation. Any parts incurred for this shall be borne by the customer
- This product is to be used in household or office and place in indoor environment with at least 15cm surrounding open space behind for ventilation
- Do not put in a place where water can spill. It should be placed in a dry, cool place with enough ventilation, and away from inflammable and explosive materials
- Do not modify the power plug or use an extension cord to avoid overload and fire
- When the supply cord is unplugged or the power supply to dispenser is discontinued, please wait at least 5 minutes before re-connecting the power and re-start
- Don't start or stop the machine working by inserting or taking out the power plug directly
- Cleaning and maintenance: Unplug the supply cord first, do not put the dispenser into the water, do not wash it with water or wipe the body with gas or chemical medication
- Rubber ware should not be allowed to contain hot water
- The water dispenser surface remains hot after use, it may cause injuries if improper use of the water dispenser
- User need to fix the dispenser according to stability anchor installation, to avoid dispenser jumping
- Need to cut power supply before installing the parts for stability

 **Warning: If the power cord is damaged, you should call for service**

 **Warning: This machine is not recommended to be used by children, elderly, persons with reduced physical, sensory or mental capabilities, lack of experience and knowledge or any person in needed without accompanied and guidance by an adult when using the machine**

 **Warning: Please have children avoid playing the machine**

 **Caution : Disconnect the power supply during cleaning and inspection to avoid electric shocks**

## HOW TO USE DISPENSER PROPERLY

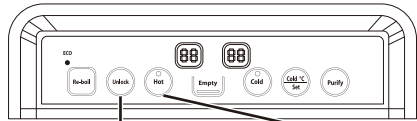
### TIP 1 Child safety lock (when using hot water)

Child safety lock when using hot water in case of any burning on children, hot tap is fixed with safety lock

Procedures:

- 1 Press the hot water anti-scalding button for three seconds
- 2 After hearing ticking, press the hot water dispensing button right away, then hot water comes out.
- 3 After filling enough water in the glass, release the button, hot water will stop flowing out; the safety lock will come back to locking status.

※even under the locking status, hot water may drip from hot tap outlet. Please prevent children from touching this place.



Hot safety button    Hot water button

### TIP 2 Regularly use cold & hot water

Should use the cold and hot water regularly and let the water come out. It can circulate the water of inner tank and avoid the water retain inside the tank for a long time.

### TIP 3 Storage place for unused barreled water

Must place in ventilated place and avoid from direct sunlight, heating and furnace

### TIP 4 Disinfection function and display

This dispenser has the function of disinfection, please press the disinfection button at the back of the machine regularly, sterilize the inner tank and pipelines and ensure sanitary and safety of drinking water.

Procedure:

Press the disinfection button for five seconds, the machine enters into disinfection model, under this model, both heating and cooling stop working, hot water temperature display is off, and cold water temperature display shows the current temperature. Meanwhile, the blue indicator light aside flashes. This model will continue for 8 hrs, and then the machine will jump out automatically from disinfection model into normal working model. If you would like to stop disinfection during the disinfection process, also press the disinfection button for 5 seconds, then it will exit from the disinfection model.

※Please do not use the water dispenser during the disinfection process

※Please choose to sterilize the water dispenser at night especially after children and elderly take a rest, in case they get burned by the hot water coming from hot tap under the disinfection model

### TIP 5 Heating function and display

When the user demands hot water, open the red heating switch at the back of the machine, it will start to heat. Meanwhile, display panel indicates the current temperature of hot water. The red indicator light beside the hot switch starts to flash, the machine stops heating and the indicator lighter becomes constant light when the temperature of hot water of hot tank is raising to the designated temperature(set at 90 °c ).When the temperature is lower than the designated preservation temperature, the machine will restart to heat automatically.

The machine is designated with reheating function, when the user thinks hot water temperature is on the low side, he or she can press heating button, then the hot tank under the preservation will begin to heat again at once(the temperature for stopping reheating is 95 °c )

### TIP 6 Cooling function ad display

Plug in the power cord and the machine starts to cooling. It will offer lower than 10 °c of cold water. When the machine is cooling, the display panel will indicate the current temperature of cold water. Under the normal working circumstance of the machine, the compressor will stop working when the temperature of cold water falls to 5 °c . It will start to work when the temperature of cold water rises to 10 °c , cold water display temperature also indicates 5 °c . During this process, icons will lighten in order from down to up, it takes 2 seconds; then all off, it takes 0.5 seconds. Keeping on such repeatedly dynamic display until the temperature will get to the set temperature, then icons will lighten all the time and stop dynamic displaying.

### TIP 7 Temperature adjustment function

Cold water temperature adjustment: the machine provide three different temperature of cold water, they are 5 °c 、8 °c 、12 °c , default value is 5 °c . Each time you press cold water temperature adjustment button, cold water temperature on display panel will change one time,

and flash 5 times after stop flashing, then the machine will work in settled cold temperature. Temperature of hot water has been settled at 90 °c, and hot water can not be adjusted.

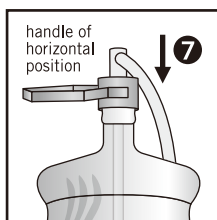
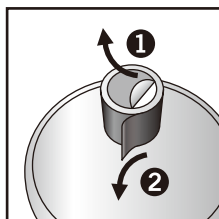
### **TIP 8 Optically controlled and energy saving**

The machine has device of optically controlled and energy saving, when users are off work or go to sleep, in situation when light are shut down, the machine will determine whether to stop the heating system of the machine according to illumination in environment by light-sensitive device, so as to achieve energy-saving effect.

## **HOW TO DRAIN WATER INSIDE DISPENSER**

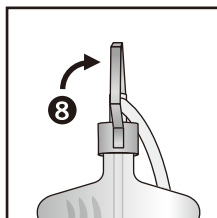
When customer goes out for a long time, please pull out water tube from the bottle; remove the water bottle out of the machine. Press down cold water button and discharge water from cold tank, then press down hot water safety button and hot water button, open hot water solenoid valve. Dispense hot water from outlet and open drain cap and remove drain plug to discharge water from hot tank. Until there is no water flow out from drain valve, then install drain plug and drain cap on the machine.

## **HOW TO EXCHANGE NEW BARRELED WATER**



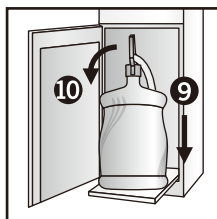
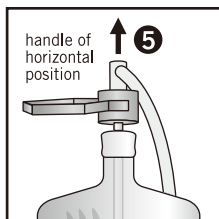
1. Put new water bottle next to water dispenser, then tear gummied paper
2. Tear the package over top of bottle
3. Open the cabinet of dispenser
4. Pull out empty water bottle from water dispenser

Attention: Please take out water tube from plastic bag for the first time

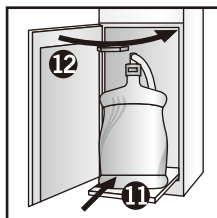
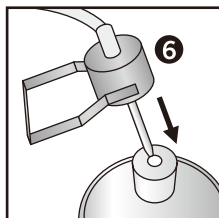


5. Pull up water tube from water bottle

Attention: Move the handle of water tube in horizontal position



6. Use water tube to remove plug inside top of bottle, do not need to tear bottle cap
7. Put the handle of water tube in horizontal position; insert water tube thoroughly into the water bottle
8. Pull up the handle of water tube in vertical position, and confirm it has locked bottle cap
9. Hold up the bottle by the handle and place bottle on the platform
10. Press the handle down



11. Push the platform back into cabinet
12. Close door, pump in water dispenser will inlet water automatically

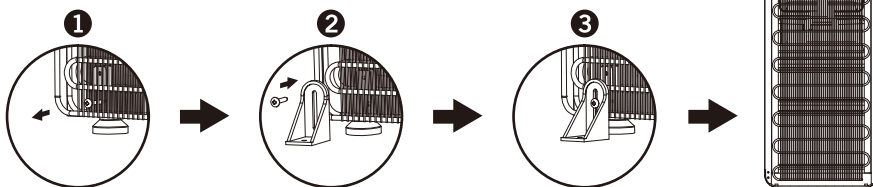
Attention: When door is not completely closed, the machine will not function well. (Stop heating and stop running water) The water pump will automatically stop after running 50 seconds. The indicator of lacking water will light on. You can open and close the cabinet at the same time, it will be able to run the water again

## STABILITY ANCHOR INSTALLATION

Description	Stability Anchors	Fixing Screw and Line Plug
Quantity	2	2

### Installation:

- 1 Please remove the screws from the lower condenser of the dispenser
- 2 Fix the stability anchors on the back of the dispenser
- 3 Fix the dispenser on level ground or table  
Use Fixing Screw and Line Plug to fix the ground or table  
Please maintain the clearance between the water dispenser and surroundings at least 15cm



## MAINTENANCE

To prevent electric shock, please turn off the hot water switch, unplug the power cord maintenance.

※Prohibit putting the machine directly into water or pouring directly

### Hot and cold faucets

Please use a clean rag or a slightly moistened kitchen towel to wipe off the dust around hot and cold faucets. (Please use alcohol-based cleaning agent to clean if the machine is in serious condition)

### Main body

Please use a clean rag or a dry towel to wipe the stain, and then use a damp sponge or soft cloth to scrub the body. (If the machine is in serious condition, please clean the machine with a mild cleaning agent and wipe off the dust)

### Drip tray and drip tray grill

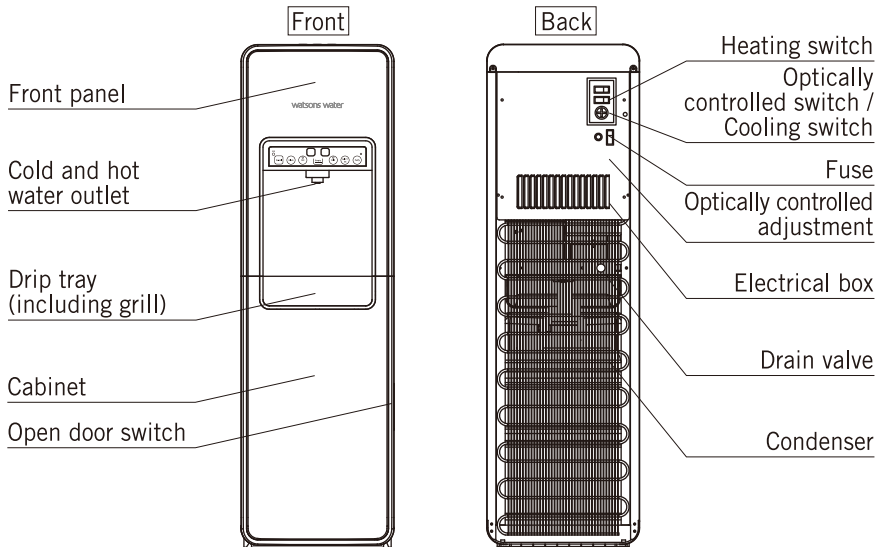
Pull up the drip tray, and then you could clean it easily. (Please use neutral detergent to clean first and use water to rinse it)

### The back part of dispenser

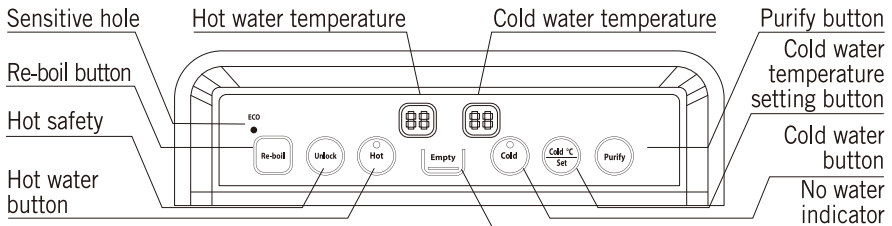
Remove the dust and cotton with vacuum cleaner and then wipe the machine use slightly moist soft cloth.

※To prevent getting burn, please pull out the plug and wait for some time before wiping.

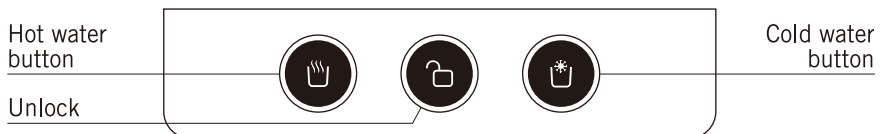
## DESCRIPTION AND STRUCTURE



## FRONT PANEL



## UPPER PANEL



Press the safety button. it will make a “beep” sound. And then press on cold or hot water button for a while, water will pour out

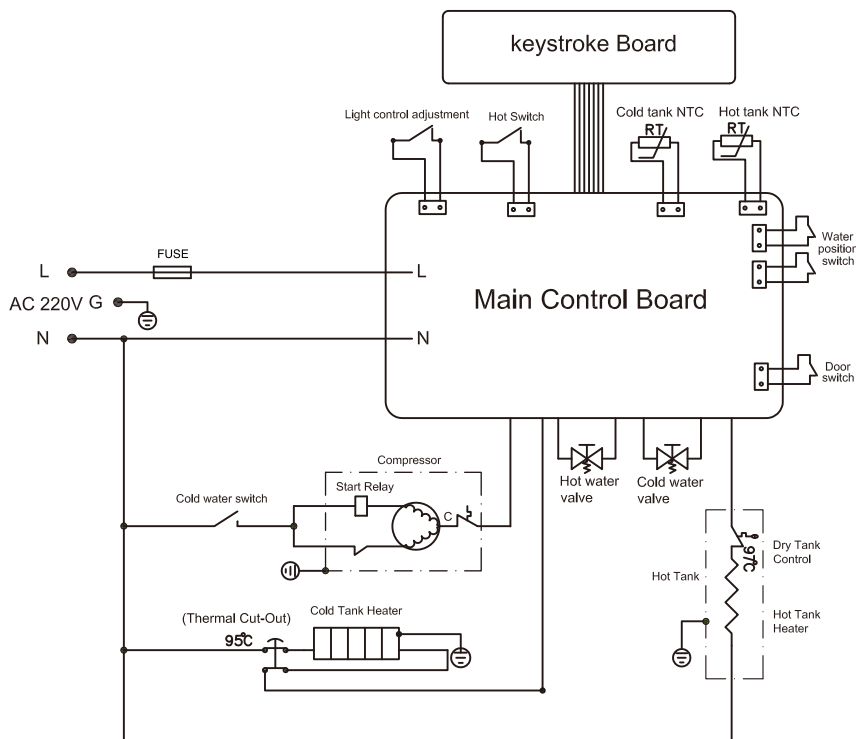


## OPTICALLY CONTROLLED AND ENERGY SAVING

The machine has device of optically controlled and energy saving, when user are off work or go to sleep, in situation when light are shut down, the machine will determine whether to stop the heating system of the machine according to illumination in environment by light-sensitive device, so as to achieve energy-saving effect. Also, the back of the machine is fitted with light sensor switch, and light sensor selection button. Light sensor totally have 5 grades to adjust, respectively D1, D2, D3, D4, D5, which can sense the light intensity respectively like 14lx, 10.5lx, 7lx, 3.5lx, 0.5lx (these are approximate value). Adjusting from D1 to D5, the device can sense less dimmer light, D5 is most sensitive to the light, D1 is weakest to sense the light.

Generally it's recommended for the user to transfer the button to D3 and D4. D1 for morning, D2 for dusk, D3 for indoor in cloudy day, D4 for indoor light, D5 for moonlit night.

## CIRCUIT DIAGRAM



## MARKING LABEL

### 注意 Attention

- ① 兒童須由成人陪同方可使用此水機  
Children should be accompanied by adults when using this dispenser
- ② 如需更換蒸餾水水樽或改變水機擺放位置，請參照使用指南指示  
Please follow the instruction manual before replacing water bottle or relocating the dispenser
- ③ 倘遇操作故障，請勿自行修理。請關掉電源並致電熱線安排公司認可人員進行維修  
Should the dispenser encounter technical problems and require maintenance, it must be serviced by the company qualified technician. Please disconnect the power source and call for service

### **HOT & CHILLED WATER DISPENSER** **MODEL: HC99L-UFD**

POWER VOLTGE: 220 V    NET WEIGHT: 19kg  
FREQUENCY: 50Hz    REFRIGERANT: R134a/34g  
TOTAL POWER: 585 W  
HEATING PWER: 500 W    RATED COOLING CURRENT: 0,6 A  
CLIMATIC CLASS: N  
DIMENSIONS: 320 W X 355 D X 1050H mm  
SERIAL NO.: 123456789  
MADE IN CHINA  
DISTRIBUTED BY: watsons water

## PROBLEM AND SOLUTION

Before repairing, please check the following items.

Problem	Possible Cause	Solution
Water not hot nor cold enough	<ul style="list-style-type: none"> <li>• Power source is not connected. Indicator on upper panels of hot and cold water do not turn on</li> </ul>	<ul style="list-style-type: none"> <li>• Plug it into outlet</li> </ul>
	<ul style="list-style-type: none"> <li>• Heating switch can not be opened</li> <li>• The fuse blew</li> </ul>	<ul style="list-style-type: none"> <li>• Open heating switch</li> <li>• Replace the fuse and call our customer service</li> </ul>
No water flows from spout. After replacing a new bottle of water, water can not flow out.	<ul style="list-style-type: none"> <li>• No water in the bottle</li> </ul>	<ul style="list-style-type: none"> <li>• Replace a new bottle of bottle</li> <li>• Open and close the cabinet until the indicator of lacking water lights on</li> </ul>
Water split from the dispenser ※ please unplug the supply card first	<ul style="list-style-type: none"> <li>• Water bottle or bottle cap are damaged ※ Call our customer service</li> </ul>	<ul style="list-style-type: none"> <li>• Replace a new bottle of water if the bottle is cracked</li> </ul>
	<ul style="list-style-type: none"> <li>• Water leaking from inside of water dispenser ※ Call our customer service</li> </ul>	<ul style="list-style-type: none"> <li>• Pull out bottle of water</li> <li>• Release the water thoroughly by pressing the cold water button (about 2 Liter)</li> </ul>
	<ul style="list-style-type: none"> <li>• Drain cap has been loosed</li> </ul>	<ul style="list-style-type: none"> <li>• Ensure seal is secured in drain plug and tightenes drain cap</li> </ul>

For any inquiries, please call our customer service hotline 2660 6688.

客 戶 服 務 熱 線

---

Customer Service Hotline

**2660 6688**

[www.watsons-water.com](http://www.watsons-water.com)