

HC99L-UFD

Upward Flow Hot & Chilled Dispenser



INSTRUCTION MANUAL



PLEASE READ THIS INSTRUCTION MANUAL THOROUGHLY BEFORE USING

Please read this instruction manual thoroughly before on-site installing, and use the water dispenser properly.

SAFETY PRECAUTION

- **Safety Precaution**

In case of any harm do to the body safety and property of the user and others, please obey the following instructions. Besides, please read the precautions thoroughly and use the water dispenser correctly.

- Users have to obey the following issues, distinguished by pictures and illustrated as following:

- **When installing**

To avoid electric shock or fire, please not to install the dispenser in wet places

The dispenser must be placed on flat and stable surface. It may fall down when placing on a unstable place

- **The relevant matters need to pay attention to plug and power cord**

To prevent electric shock, electric leakage and fire, power cord and plug cannot be defected and twisted

To avoid fire, 220V AC socket must be plugged separately

To avoid accident, do not use extension cord or multi-plug socket

Need to unplug when cleaning the back side of the dispenser

To avoid electric shock, please not to use wet hand to touch the plug

Clean the dust of the plug regularly with dry cloth in order to avoid fire

If the power cord is damaged, please call Customer Service Hotline for maintenance and not to replace or repair the dispenser by yourself

- **Other matters need to pay attention**

To avoid scalding, do not allow children to play with the hot water faucet

Don't touch the condenser at the back of water dispenser as high temperature may lead to scald

Place the water dispenser for one hour after arrival which can stabilize the refrigerant

This dispenser should be placed on leveled surface in indoor environment with at least 15cm surrounding open space behind for ventilation.

If the dispenser is overheating, it may affect the performance of the machine and cause fire

NOTES OF OPERATION

• Other notes

This water dispenser is designed for indoor use only.

Please don't put it under the direct sunlight and rain. Otherwise, it may lead to low performance and electric leakage

Please don't put it besides torch or other heat machine, it may lead to a low performance or deformation

When using it first time, connect the machine to the power supply, press down the hot water tap until water comes out. Switch the heating button on at the back of the machine until the hot water comes out. Otherwise, it may be cause malfunction


The barrel may be broken if bottled water falls down on the floor.

The machine may leak water


Can't put objects on the water dispenser. Otherwise, it may fall down

- Place the water dispenser on a leveled surface
- If the dispenser places other than the above mentioned, please call our customer service hotline for proper installation. Any parts incurred for this shall be borne by the customer
- This product is to be used in household or office and place in indoor environment with at least 15cm surrounding open space behind for ventilation
- Do not put in a place where water can spill. It should be placed in a dry, cool place with enough ventilation, and away from inflammable and explosive materials
- Do not modify the power plug or use an extension cord to avoid overload and fire
- When the supply cord is unplugged or the power supply to dispenser is discontinued, please wait at least 5 minutes before re-connecting the power and re-start
- Don't start or stop the machine working by inserting or taking out the power plug directly
- Cleaning and maintenance: Unplug the supply cord first, do not put the dispenser into the water, do not wash it with water or wipe the body with gas or chemical medication
- Rubber ware should not be allowed to contain hot water
- The water dispenser surface remains hot after use, it may cause injuries if improper use of the water dispenser
- User need to fix the dispenser according to stability anchor installation, to avoid dispenser jumping
- Need to cut power supply before installing the parts for stability

 **Warning: If the power cord is damaged, you should call for service**

 **Warning: This machine is not recommended to be used by children, elderly, persons with reduced physical, sensory or mental capabilities, lack of experience and knowledge or any person in needed without accompanied and guidance by an adult when using the machine**

 **Warning: Please have children avoid playing the machine**

 **Caution : Disconnect the power supply during cleaning and inspection to avoid electric shocks**

HOW TO USE DISPENSER PROPERLY

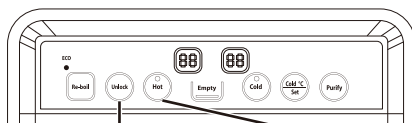
TIP 1 Child safety lock (when using hot water)

Child safety lock when using hot water in case of any burning on children, hot tap is fixed with safety lock

Procedures:

- 1 Press the hot water anti-scalding button for three seconds
- 2 After hearing ticking, press the hot water dispensing button right away, then hot water comes out.
- 3 After filling enough water in the glass, release the button, hot water will stop flowing out; the safety lock will come back to locking status.

※even under the locking status, hot water may drip from hot tap outlet. Please prevent children from touching this place.



Hot safety button Hot water button

TIP 2 Regularly use cold & hot water

Should use the cold and hot water regularly and let the water come out. It can circulate the water of inner tank and avoid the water retain inside the tank for a long time.

TIP 3 Storage place for unused barreled water

Must place in ventilated place and avoid from direct sunlight, heating and furnace

TIP 4 Disinfection function and display

This dispenser has the function of disinfection, please press the disinfection button at the back of the machine regularly, sterilize the inner tank and pipelines and ensure sanitary and safety of drinking water.

Procedure:

Press the disinfection button for five seconds, the machine enters into disinfection model, under this model, both heating and cooling stop working, hot water temperature display is off, and cold water temperature display shows the current temperature. Meanwhile, the blue indicator light aside flashes. This model will continue for 8 hrs, and then the machine will jump out automatically from disinfection model into normal working model. If you would like to stop disinfection during the disinfection process, also press the disinfection button for 5 seconds, then it will exit from the disinfection model.

※Please do not use the water dispenser during the disinfection process

※Please choose to sterile the water dispenser at night especially after children and elderly take a rest, in case they get burned by the hot water coming from hot tap under the disinfection model

TIP 5 Heating function and display

When the user demands hot water, open the red heating switch at the back of the machine, it will start to heat. Meanwhile, display panel indicates the current temperature of hot water. The red indicator light beside the hot switch starts to flash, the machine stops heating and the indicator lighter becomes constant light when the temperature of hot water of hot tank is raising to the designated temperature(set at 90 °c).When the temperature is lower than the designated preservation temperature, the machine will restart to heat automatically.

The machine is designated with reheating function, when the user thinks hot water temperature is on the low side, he or she can press heating button, then the hot tank under the preservation will begin to heat again at once(the temperature for stopping reheating is 95 °c)

TIP 6 Cooling function ad display

Plug in the power cord and the machine starts to cooling. It will offer lower than 10 °c of cold water. When the machine is cooling, the display panel will indicate the current temperature of cold water. Under the normal working circumstance of the machine, the compressor will stop working when the temperature of cold water falls to 5 °c . It will start to work when the temperature of cold water rises to 10 °c , cold water display temperature also indicates 5 °c . During this process, icons will lighten in order from down to up, it takes 2 seconds; then all off, it takes 0.5 seconds. Keeping on such repeatedly dynamic display until the temperature will get to the set temperature, then icons will lighten all the time and stop dynamic displaying.

TIP 7 Temperature adjustment function

Cold water temperature adjustment: the machine provide three different temperature of cold water, they are 5 °c 、8 °c 、12 °c , default value is 5 °c . Each time you press cold water temperature adjustment button, cold water temperature on display panel will change one time,

and flash 5 times after stop flashing, then the machine will work in settled cold temperature. Temperature of hot water has been settled at 90 °c, and hot water can not be adjusted.

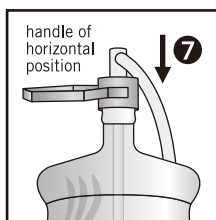
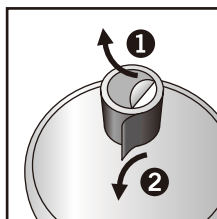
TIP 8 Optically controlled and energy saving

The machine has device of optically controlled and energy saving, when users are off work or go to sleep, in situation when light are shut down, the machine will determine whether to stop the heating system of the machine according to illumination in environment by light-sensitive device, so as to achieve energy-saving effect.

HOW TO DRAIN WATER INSIDE DISPENSER

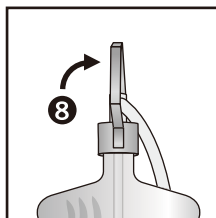
When customer goes out for a long time, please pull out water tube from the bottle; remove the water bottle out of the machine. Press down cold water button and discharge water from cold tank, then press down hot water safety button and hot water button, open hot water solenoid valve. Dispense hot water from outlet and open drain cap and remove drain plug to discharge water from hot tank. Until there is no water flow out from drain valve, then install drain plug and drain cap on the machine.

HOW TO EXCHANGE NEW BARRELED WATER



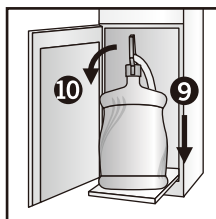
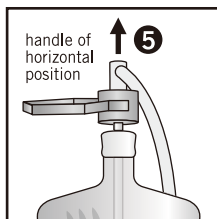
1. Put new water bottle next to water dispenser, then tear gummy paper
2. Tear the package over top of bottle
3. Open the cabinet of dispenser
4. Pull out empty water bottle from water dispenser

Attention: Please take out water tube from plastic bag for the first time

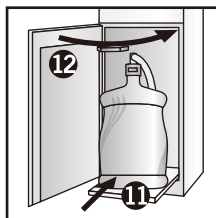
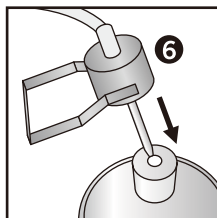


5. Pull up water tube from water bottle

Attention: Move the handle of water tube in horizontal position



6. Use water tube to remove plug inside top of bottle, do not need to tear bottle cap
7. Put the handle of water tube in horizontal position; insert water tube thoroughly into the water bottle
8. Pull up the handle of water tube in vertical position, and confirm it has locked bottle cap
9. Hold up the bottle by the handle and place bottle on the platform
10. Press the handle down
11. Push the platform back into cabinet
12. Close door, pump in water dispenser will inlet water automatically



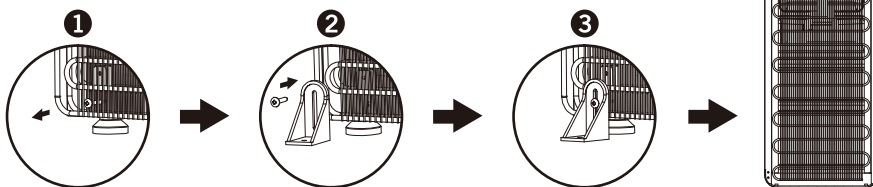
Attention: When door is not completely closed, the machine will not function well. (Stop heating and stop running water) The water pump will automatically stop after running 50 seconds. The indicator of lacking water will light on. You can open and close the cabinet at the same time, it will be able to run the water again

STABILITY ANCHOR INSTALLATION

Description	Stability Anchors	Fixing Screw and Line Plug
Quantity	2	2

Installation:

- 1 Please remove the screws from the lower condenser of the dispenser
- 2 Fix the stability anchors on the back of the dispenser
- 3 Fix the dispenser on level ground or table
Use Fixing Screw and Line Plug to fix the ground or table
Please maintain the clearance between the water dispenser and surroundings at least 15cm



MAINTENANCE

To prevent electric shock, please turn off the hot water switch, unplug the power cord maintenance.

※Prohibit putting the machine directly into water or pouring directly

Hot and cold faucets

Please use a clean rag or a slightly moistened kitchen towel to wipe off the dust around hot and cold faucets. (Please use alcohol-based cleaning agent to clean if the machine is in serious condition)

Main body

Please use a clean rag or a dry towel to wipe the stain, and then use a damp sponge or soft cloth to scrub the body. (If the machine is in serious condition, please clean the machine with a mild cleaning agent and wipe off the dust)

Drip tray and drip tray grill

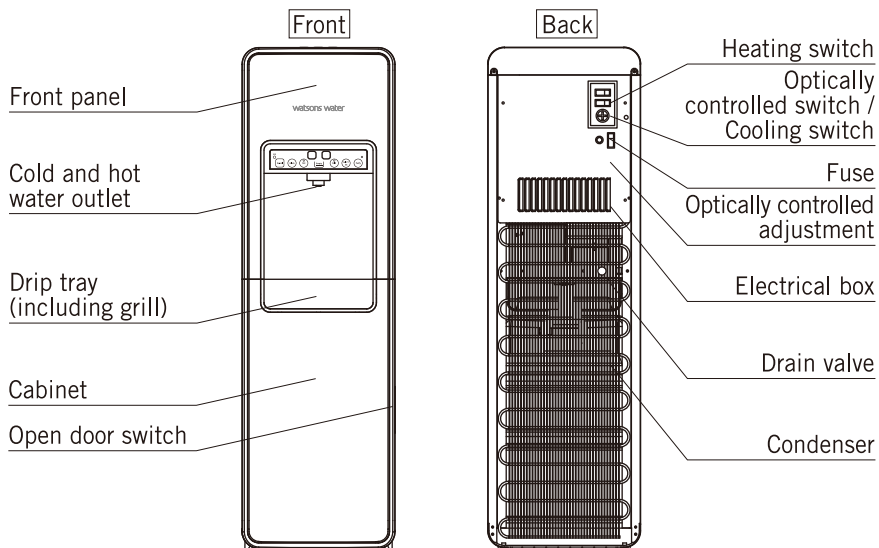
Pull up the drip tray, and then you could clean it easily. (Please use neutral detergent to clean first and use water to rinse it)

The back part of dispenser

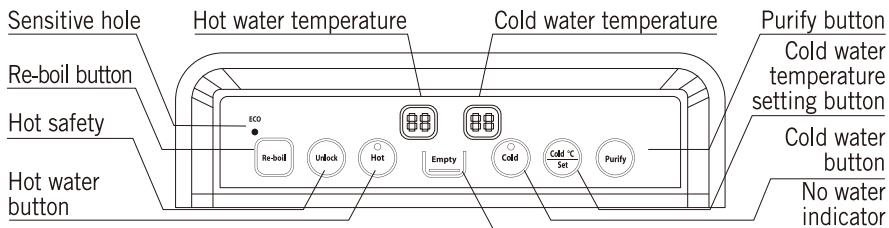
Remove the dust and cotton with vacuum cleaner and then wipe the machine use slightly moist soft cloth.

※To prevent getting burn, please pull out the plug and wait for some time before wiping.

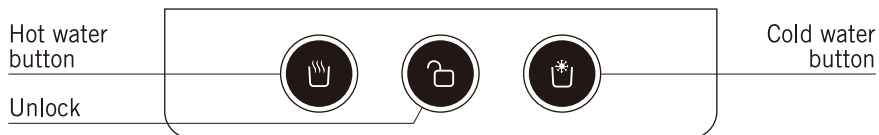
DESCRIPTION AND STRUCTURE



FRONT PANEL



UPPER PANEL



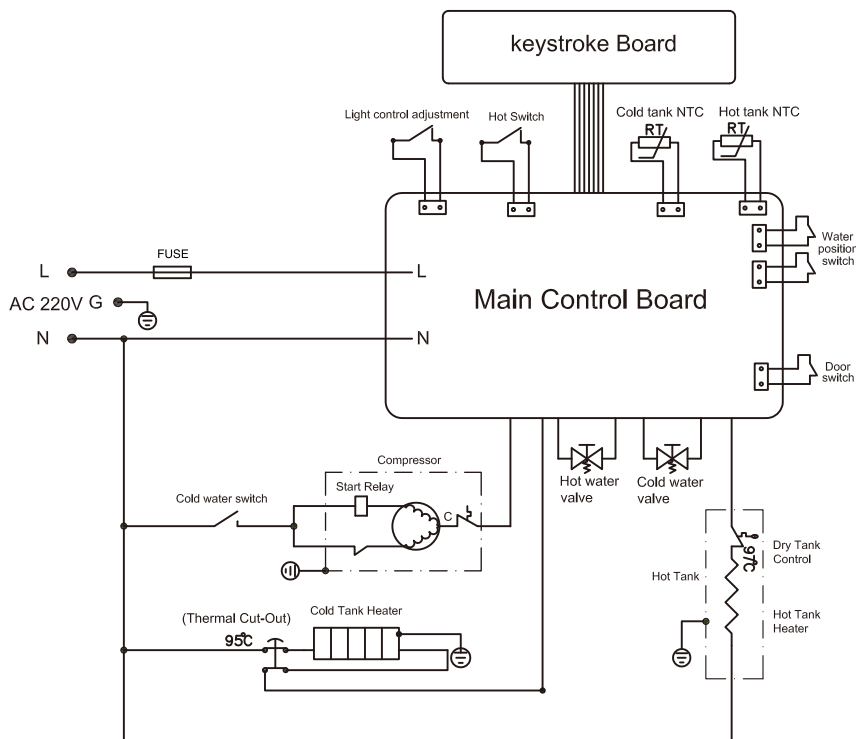
Press the safety button. it will make a “beep” sound. And then press on cold or hot water button for a while, water will pour out

OPTICALLY CONTROLLED AND ENERGY SAVING

The machine has device of optically controlled and energy saving, when user are off work or go to sleep, in situation when light are shut down, the machine will determine whether to stop the heating system of the machine according to illumination in environment by light-sensitive device, so as to achieve energy-saving effect. Also, the back of the machine is fitted with light sensor switch, and light sensor selection button. Light sensor totally have 5 grades to adjust, respectively D1, D2, D3, D4, D5, which can sense the light intensity respectively like 14lx, 10.5lx, 7lx, 3.5lx, 0.5lx (these are approximate value). Adjusting from D1 to D5, the device can sense less dimmer light, D5 is most sensitive to the light, D1 is weakest to sense the light.

Generally it's recommended for the user to transfer the button to D3 and D4. D1 for morning, D2 for dusk, D3 for indoor in cloudy day, D4 for indoor light, D5 for moonlit night.

CIRCUIT DIAGRAM



MARKING LABEL



注意 Attention

- ① 兒童須由成人陪同方可使用此水機
Children should be accompanied by adults when using this dispenser
- ② 如需更換蒸餾水水樽或改變水機擺放位置，請參照使用指南指示
Please follow the instruction manual before replacing water bottle or relocating the dispenser
- ③ 倘遇操作故障，請勿自行修理。請關掉電源並致電熱線安排公司認可人員進行維修
Should the dispenser encounter technical problems and require maintenance, it must be serviced by the company qualified technician. Please disconnect the power source and call for service

HOT & CHILLED WATER DISPENSER **MODEL: HC99L-UFD**

POWER VOLTGE: 220 V NET WEIGHT: 19kg
FREQUENCY: 50Hz REFRIGERANT: R134a/34g
TOTAL POWER: 585 W
HEATING PWER: 500 W RATED COOLING CURRENT: 0,6 A
CLIMATIC CLASS: N
DIMENSIONS: 320 W X 355 D X 1050H mm
SERIAL NO.: 123456789
MADE IN CHINA
DISTRIBUTED BY: watsons water

PROBLEM AND SOLUTION

Before repairing, please check the following items.

Problem	Possible Cause	Solution
Water not hot nor cold enough	<ul style="list-style-type: none"> • Power source is not connected. Indicator on upper panels of hot and cold water do not turn on 	<ul style="list-style-type: none"> • Plug it into outlet
	<ul style="list-style-type: none"> • Heating switch can not be opened • The fuse blew 	<ul style="list-style-type: none"> • Open heating switch • Replace the fuse and call our customer service
No water flows from spout. After replacing a new bottle of water, water can not flow out.	<ul style="list-style-type: none"> • No water in the bottle 	<ul style="list-style-type: none"> • Replace a new bottle of bottle • Open and close the cabinet until the indicator of lacking water lights on
Water split from the dispenser ※ please unplug the supply card first	<ul style="list-style-type: none"> • Water bottle or bottle cap are damaged ※ Call our customer service 	<ul style="list-style-type: none"> • Replace a new bottle of water if the bottle is cracked
	<ul style="list-style-type: none"> • Water leaking from inside of water dispenser ※ Call our customer service 	<ul style="list-style-type: none"> • Pull out bottle of water • Release the water thoroughly by pressing the cold water button (about 2 Liter)
	<ul style="list-style-type: none"> • Drain cap has been loosed 	<ul style="list-style-type: none"> • Ensure seal is secured in drain plug and tightenes drain cap

For any inquiries, please call our customer service hotline 2660 6688.

Customer Service Hotline

2660 6688

www.watsons-water.com