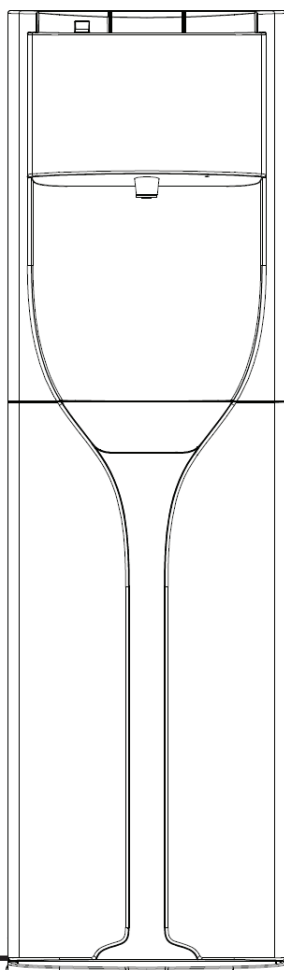




# HC90L-UFD 上流式 LED UVC 冷熱飲水機

HC90L-UFD Upward LED UVC H&C Water Dispenser



## 產品說明書

INSTRUCTION MANUAL

EA035031

K

## 目錄

### 頁數

■ 目錄 . . . . .	1
■ 安全注意事項 . . . . .	2-3
■ 部件名稱及功能 . . . . .	4-5
■ 使用方法及安裝步驟 . . . . .	6-8
■ 故障處理 . . . . .	9
■ 保養 . . . . .	10
■ 電路圖及銘牌 . . . . .	11

## 於安裝水機前仔細閱讀《產品說明書》

請在安裝之前詳細閱讀本說明書，並正確使用飲水機。

### 使用須知及注意事項

- 本機只適合室內使用，如家居、店舖、辦公室、酒店、旅館及餐廳等類型環境。
- 本產品為塑料外殼，電源線採用三極安全插頭（插頭處有標示接地符號），使用時必須把插頭插入有接地線的三極安全插座上，禁止用力拉扯電源線，如果電源線損壞，用戶不得擅改插頭，必須在指定維修部購買專用配件及由公司專業人員更換。
- 使用前務必查看線路是否符合銘牌中各參數的電壓、功率標識，防止線路過載。
- 初次使用本產品或長期停用後重新使用本產品，首杯水不建議飲用。
- 任何時候，請務必不要接觸水機的出水口，以免導致燙傷。
- 水機在工作時不得更換水樽及水杯。
- 避免水機傾倒，請將水機固定於平面上，如有需要，可與客戶服務部聯絡。
- 本產品只適用於使用屈臣氏蒸餾水樽裝水，嚴禁倒入牛奶，飲料等其它液體加熱。
- 因不正當用途、錯誤使用、操作不當和擅自修理拆卸本產品，本公司概不負任何責任，因此而導致的損壞也不在維修範圍內。
- 本產品嚴禁幼兒操作，以免熱水燙傷，在有幼兒的場所使用，建議啟用童鎖功能。
- 本產品應遠離高溫，放置在陰涼、乾燥、通風的環境中，禁止有戶外，陽光直射或有水噴濺的地方使用，並遠離易燃及易爆物品。
- 棄置處理，請使用垃圾分類收集設施，聯繫當地政府關於可用的垃圾回收系統資訊。如果家用電器在垃圾堆填區或垃圾場處置，有害物質可能會滲到地下水並進入食物鏈，損害您的健康。
- 飲水機請平穩放置於平面上，四周與牆壁必須有15厘米或以上間隔，水機過熱可能使機器的部件損壞而引起火災。
- 本水機建議使用環境溫度為2-38°C。
- 當水機進行清潔或維修前，應先關掉電源開關，然後拔掉電源插頭，不要將水機放入水中清洗，或用氣體或化學藥劑來擦洗機身。



- 不要直接將水噴到水機表面進行清洗，請以乾淨之濕抹布清潔機身和水箱，不要使用化學洗劑清潔機身和水箱。
- 如果電源線損壞，必須由製造商、其服務代理商或相關的專業人員，以避免危險更換。
- 高溫水為沸騰的水，切勿使用橡膠容器盛載。
- 當底部接水盤滿時，只需用手將接水盤向外取，將水倒掉，然後安放回原處即可。

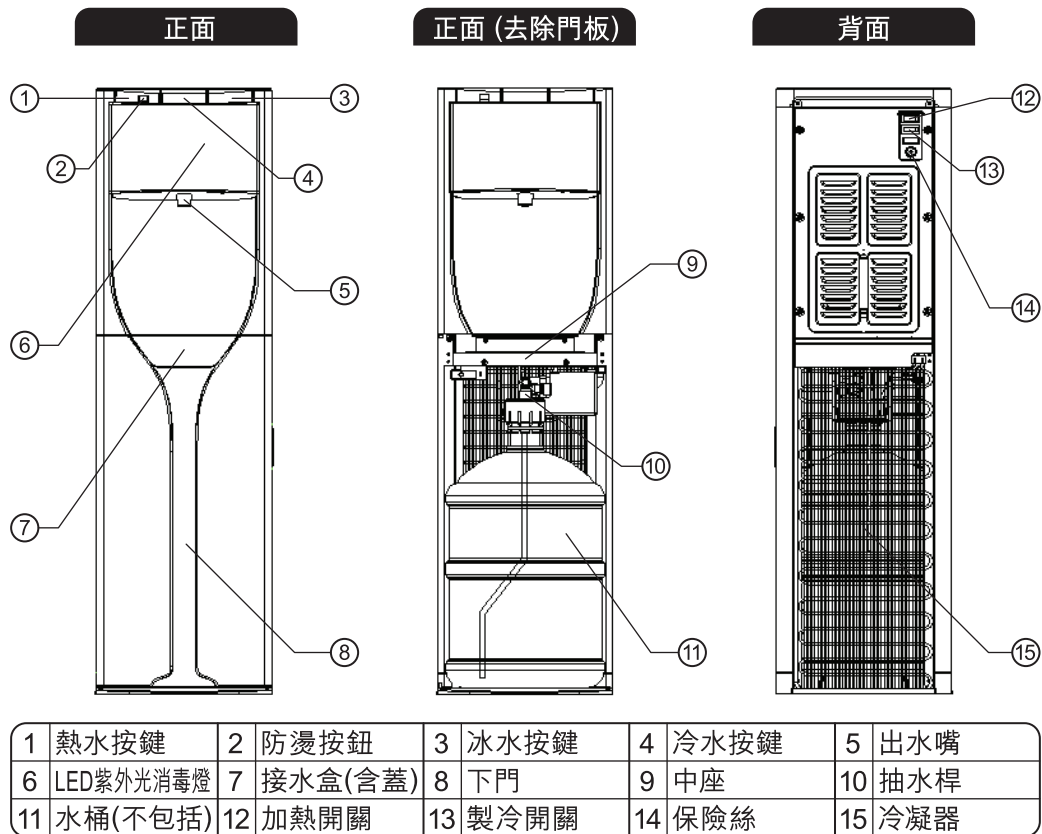
⚠ 注意：避免觸電，請在清洗或檢查水機前切斷電源。

⚠ 警告：勿讓孩童、老人、行動不便、殘疾、缺乏使用水機經驗或有需要協助人士單獨使用本水機，需要成人在旁監督指導及協助，避免發生意外，除非他們已獲得負責他們安全的人就使用本產品之監督或指導。

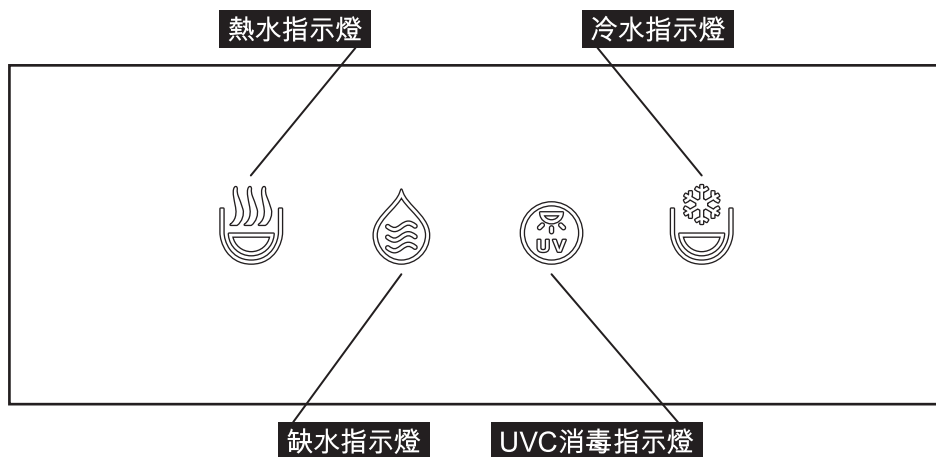
⚠ 警告：勿讓孩童耍玩本水機，以免發生危險或造成破壞。

⚠ 警告：本水機只能使用固定且合適的連接電源，不能使用接線板，以免因接線板過電量不夠引發火災。

## 結構及組件



## 顯示板



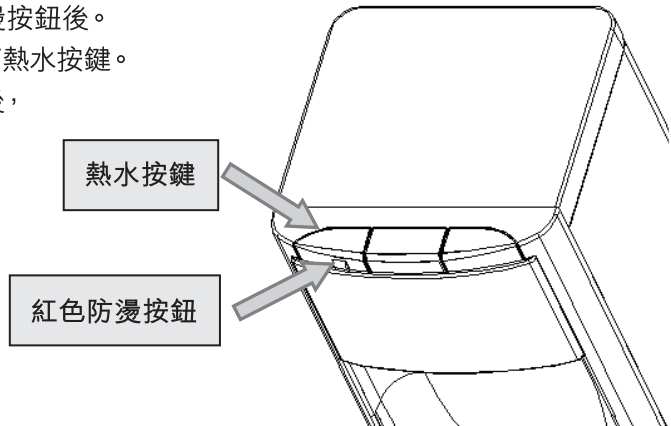
## 操作說明

### 按鍵 1 兒童安全鎖(熱水鍵適用)

為了避免小朋友燙傷，熱水按鍵上設有安全鎖。

操作步驟：

- ① 用大拇指按壓紅色防燙按鈕後。
- ② 同時用食指或中指按下熱水按鍵。
- ③ 當杯中裝好適量的水後，  
把按鍵鬆開，  
熱水會停止流出，  
安全鎖會恢復為  
上鎖狀態。



## 功能說明

### 功能 1 加熱功能及顯示

機器插上電源後，按下機器背部的紅色加熱開關，機器開始加熱。加熱過程中顯示面板加熱指示燈閃爍，大約需要20分鐘左右，加熱完成後指示燈常亮便可提供熱水，當熱水溫度低於保溫溫度時，機器加熱功能啟動。

### 功能 2 製冷功能及顯示

機器插上電源後，按下機器背部的綠色製冷開關，機器開始製冷。大約需要40分鐘，可提供低於10°C攝氏度的冷水。在機器製冷過程中顯示面板製冷指示燈閃爍，製冷完成後指示燈常亮，當冷水溫度高於保溫溫度時，機器製冷功能啟動。

### 功能 3 缺水顯示

機器正常工作時，缺水指示燈為綠燈常亮；當缺水時，缺水指示燈變成紅燈閃爍，提示更換水桶。

### 功能 4 UVC殺菌及顯示

通電後UVC LED燈會進行20分鐘消毒，消毒工作進行中，UVC指示燈閃爍；消毒完成時，UVC指示燈熄滅，之後備用160分鐘，再運行，如UVC LED燈正處於備用狀況下，客戶按水掣會立即啟動20分鐘消毒，再備用160分鐘，之後再運行如此類推。

## 水機使用方法

- 1 把飲水機從包裝箱裡取出，然後再將飲水機放置在堅固的水平地面上。飲水機的背面與牆壁請間隔15厘米以上以助散熱。
- 2 桶裝水樽口上的膠紙封條揭開。
- 3 將桶裝水蓋面的密封貼紙撕掉。 **絕對不可以拔掉白色的桶蓋**
- 4 打開下門。移除套在抽水桿上的包裝袋。
- 5 把抽水桿對準桶口，插入桶內，確保抽水桿卡套套住桶口。
- 6 把帶有抽水桿的水桶推入到水機下櫃內，確保水桶推到位後關閉下門。
- 7 插上電源線插頭，水泵會開始工作，抽水往冷罐和熱罐裡，3分鐘後，分別按壓熱水按鍵、冷水按鍵、冰水按鍵，出水嘴均有水流出且均勻順暢，此時可按下飲水機背面的加熱、製冷開關。(為了保障飲用水的衛生，請先倒掉約兩個杯子份量的水。)
- 8 等待約40分鐘後，就可飲用冷水、熱水。

## 首次安裝的步驟

### 請注意

機器插上電源插頭後，按下熱水按鍵，出水嘴能出水後，方可按下加熱開關。

**注意** 如果在未供水的情況下通電，飲水機的熱膽會乾燒，熱保護溫控器會斷開，導致機器故障，無法正常加熱。

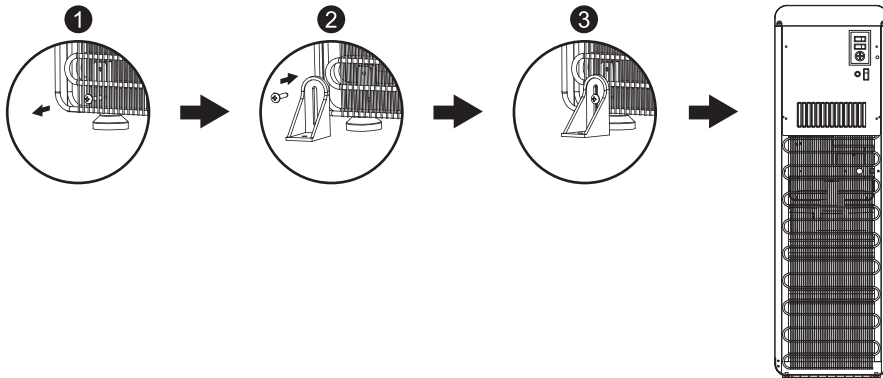
①飲水機，②水，可能會分別配送。請在①②都送達後，再開始進行安裝步驟。

## 固定裝置安裝說明

名稱	固定支架	螺釘、膠塞
數量	2	2

### 安裝說明：

- ❶ 按圖示將左右下角的螺釘拆下
- ❷ 拆下機後散熱網左、右下面螺釘，用螺釘將固定支架固定於飲水機的左右下角
- ❸ 用螺釘及膠塞將支架固定於飲水機安放的地面，並保持水機離牆四周至少有15厘米空間距離



## 飲水機更換水樽程序說明

1. 將一支水樽放在水機門旁，並把桶裝水樽口上的膠紙封條揭開。
2. 將桶裝水蓋的密封貼紙撕掉。
3. 打開水機正面下方的水櫃門。
4. 小心輕手從水櫃內，把已經飲用完的水樽拉出。

注意：如首次安裝，請將不鏽鋼吸水管的膠袋取出。

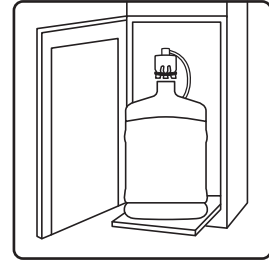
5. 把不鏽鋼吸水管從水樽口向上拉出。
6. 用不鏽鋼吸水管把樽蓋內的活塞蓋退開。(白芯蓋推開)

注意：不用把樽蓋撕走。

7. 把不鏽鋼吸水管放入。
8. 確認已經鎖緊樽蓋。
9. 將水樽提起及把水樽放在水機底盤斜台的邊上。
10. 小心將水樽推進水櫃內。

11. 關上水機正面下方水櫃門，水機內的水泵便自動把水樽內的水抽入水機。

注意：如水櫃門未能完全關上，水機將不會運作(停止製熱及不會抽水)水泵運行約50秒將自動停止，如缺水顯示燈亮起，此時只需把櫃門打開，再關上，即可再次抽水。



## 更換桶裝水的注意事項

- 更換水桶時，先拔出抽水桿，待取到新水桶，先把抽水桿插入水桶內再推入機器內，確認全部推入後關上門。
- 更換桶裝水時，無須關閉電源及熱水開關。

## 技術參數

名稱	HC90L-UFD		
機身尺寸	長 320毫米	材質	熱膽/SUS304 正面板/ABS 側面板/冷軋板 水龍頭/PP
	寬 300毫米	雪種	R134a
	高 1040毫米	加熱方式	電熱管約在5分鐘內加熱
製冷功率	85W	冰水流量	2.4公升/分鐘，冷膽容量2.9公升
製熱功率	500W	冷水流量	2.3公升/分鐘，和冰膽共用同一個膽
額定電壓	AC220V/50Hz	熱水流量	1.5公升/分鐘，熱膽容量1.9公升
製冷方式	壓縮機製冷	出水溫度*	熱水85-88°C/冷水10-25°C/冰水5-10°C

\*備註：水溫可能會受使用者的飲水量或不同環境因素影響而出現偏差。

## 常見故障、分析與處理方法

送修前，請先確認以下的項目。

故障狀況	原因	處理方式
機器不通電	● 電源未接通	● 檢查電源插座是否插好
	● 溫控開關進入乾燒保護	● 安排專業人員檢查排除
	● 內部連接線鬆脫	
按鍵不出水	● 機器進入童鎖狀態	● 檢查顯示屏上童鎖按鍵燈是否亮並進行解除
	● 電路控制故障	● 安排專業人員檢查排除
沒有水流出或水流太小	● 機器內水垢或雜質太多堵住水口	● 除垢，檢查水箱進水口
溫度不足	● 插頭沒有插在插座上正面的通電指示燈(熱水、冷水指示燈)沒有亮	● 請將插頭插上
	● 製冷、製熱開關沒開啟 ● 保險絲燒斷	● 開啟製冷、製熱開關 ● 需要換保險絲 ※請聯絡客服中心。
	● 門沒關上	● 請關上門
	● 水垢太多/或電路控制功能異常	● 除垢/送固定維修點維修
	● 電源電壓異常	● 請專業人員檢查電源電壓
出現漏水的現象。 ※確定有漏水現象時，請先把插頭拔掉。  飲水機的周圍出現漏水。 水從機身內部漏出(從機身下方滲出) 水從中座底部的排污閥漏出。	● 桶裝水有損壞。 ※請聯絡客服中心。	● 桶身有損壞時，請更換新的桶裝水。
	● 水從機身內部漏出 ※請聯絡客服中心。	● 將機器裡面的水從中座下面的排污閥排出。
	● 熱水按鍵、冷水按鍵、冰水按鍵被外物卡住，不能復位。	● 檢查熱水按鍵、冷水按鍵、冰水按鍵能否正常重定，如果有外物，請取出外物。

如有查詢，請聯絡香港客服中心(852) 2660 6688或澳門客服中心(853) 2857 3088，或瀏覽本公司網頁[www.watsons-water.com](http://www.watsons-water.com)。

## 保養及維修

- 屈臣氏蒸餾水提供12個月免費保養服務，保養期由收貨日起計12個月內有效；保養期過後更換零件需另外收費，建議保留購買單據證明。
- 如需維修服務，請聯絡香港客服中心(852) 2660 6688或澳門客服中心(853) 2857 3088預約時間。
- 免費保養期內，下列情況不適用於免費保養範圍，敬請留意！
  1. 未按說明書使用，維護而導致產品故障和損壞的。
  2. 擅自改動或拆機的。
  3. 人為因素導致產品損壞的，如(往水箱灌高溫水，其他飲制品加熱，從高處摔落等)。
  4. 因不可抗拒原因導致損壞的，如其他誘因導致火災、水災、地震、雷擊等情況。
  5. 其他非本產品本身技術質量而導致故障或損壞的。
  6. 對於因事故、更改、所使用之環境、錯誤操作、故意損壞或沒有遵照本公司之指引進行安裝、清潔或維修而導致的任何故障、損壞或意外，本公司概不負責。
- 本公司保留對說明書相關內容說明權，以及相關決定權。

## 平時保養的重點

為防止觸電，請先關掉熱水開關，拔掉插頭，然後再進行保養。

- 清洗或保養時，請勿將機器直接浸泡於水中，並且禁止直接向機器澆水。

### 出水嘴周圍

出水嘴周圍請將乾淨的抹布，或是廚房用紙巾稍微沾濕，然後擦掉灰塵。如果污垢情況嚴重，請用市面上銷售的酒精類清洗劑來殺菌。

### 接水盒和接水盒蓋

只要把接水盒往上提，就能簡單取下。(請用中性清洗劑清洗，再用清水洗清)

### 機身

請用乾淨的抹布，或是乾毛巾擦去污垢，然後再用濕海綿或是軟布擦拭機身。(如果污垢情況嚴重，請用中性清洗劑清洗，並將清洗劑擦拭乾淨)

### 背面部分

用吸塵器將附著的灰塵、棉絮除去後，用軟布沾水後扭乾，然後在進行擦拭。

- 為了防止燙傷，擦拭前請先拔掉插頭，並靜待一段時間。

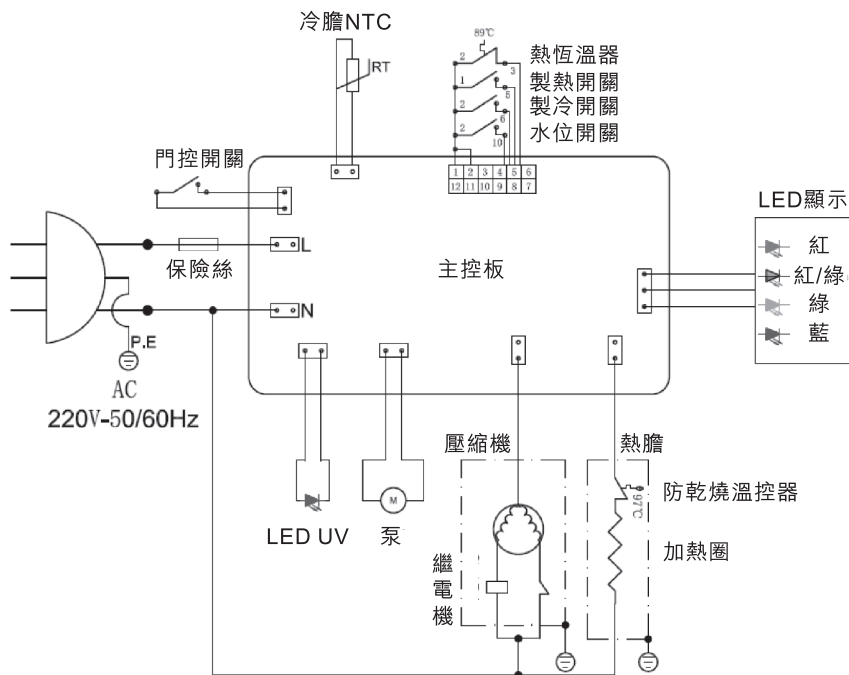
### 洗水機消毒服務

建議每3個月清洗一次水機，確保能夠提供優質飲用水。

查詢請聯絡香港客服中心(852) 2660 6688或澳門客服中心(853) 2857 3088



## 電路圖



## 銘牌

### 注意 Attention ⚠

- ① 兒童須由成人陪同方可使用此水機。  
Children should be accompanied by adults when using this dispenser.
- ② 如需要更換蒸餾水水樽或改變水機擺放位置，請參照使用指南指示。  
Please follow the instruction manual before replacing water bottle or relocating the dispenser.
- ③ 倘遇操作故障，請勿自行修理。請關掉電源並致電熱線安排公司認可人員進行維修。  
Should the dispenser encounters any technical problem and requires maintenance service, it must be tackled by the company qualified technician. Please disconnect the power source and call for service.

### HC90L-UFD Upward LED UVC H&C Water Dispenser

MODEL: HC90L-UFD	SERIAL NO: ACYYYYMMDDXXX
POWER VOLTAGE: 220 V	MADE IN CHINA
FREQUENCY: 50 Hz	DISTRIBUTED BY: Watsons Water
NET WEIGHT: 15kg	TOTAL RATED POWER: 585 W
DIMENSIONS: 1040(H) x 300(W) x 320(D) mm	

K

# Contents

## Pages

■ Contents . . . . .	13
■ Safety Precaution . . . . .	14-15
■ Dispenser Components & Functionalities . . . . .	16-17
■ Instructions and Installation Steps . . . . .	18-20
■ Troubleshooting . . . . .	21
■ Warranty . . . . .	22-23
■ Circuit Diagram & Marking Label . . . . .	24

## Please read this user manual thoroughly before dispenser installation

Please go through this user manual in details before installation and use the dispenser appropriately.

### Guidance Notes and Precaution

- This dispenser is only suitable for indoor usage, such as at homes, in shops, offices, hotels, hostels and restaurants.
- The outer shell of this dispenser is made of plastic and is equipped with a 3-pole power cable safety plug (with connection symbol display label on the plug). Connect the plug in respective socket while in use and do not rip the power cable. If the power cable is damaged, do not replace the plug yourself. Users should purchase the designated plug at the maintenance department and have it replaced by professional technicians.
- Check whether the power cable is compatible with the voltage to avoid short-circuiting and overloading.
- It is not recommended to drink the first cup of water upon installation or consumption after a long period of time.
- Avoid touching the dispenser spout at all times in prevention of scald.
- Do not change cups and/or water bottles when the dispenser is functioning.
- In order to prevent dispenser from collapsing, please install stability anchor and place it on a plane surface; contact customer service if necessary.
- This dispenser is only compatible with Watsons Water's bottled water products. Do not reheat milk and other beverages with it.
- Watsons Water is not responsible for any misappropriate and illegal usages or damages resulting from customer self repairs; Watsons Water's repair services is also excluded from such incidents.
- Prevent young children from using the dispenser to avoid scald. It is recommended to enable anti-scald lock function when children are around.
- Place dispenser in cool and dry environments with good ventilation. Avoid operating it in hot, high-heat and outdoor environments, locations with direct sunlight, water splash and explosives.
- For Disposal, use categorized trash collection facilities accordingly and contact local governmental bodies for trash recycling information. If home electrical appliances are handled in landfills or related facilities, released chemicals may contaminate underground water as well as food chains and create health hazards.

- The dispenser should be placed on a plane surface and kept a distance of 15cm or more from its rear and side panels with the surroundings for ventilation. Over-heating may cause damages to components and can cause fire.
- It is suggested to operate the dispenser in environments with room temperature between 2-38°C.
- Switch off and unplug the dispenser before cleaning and repairing. Do not place dispenser in water during cleaning or clean it with steam or disinfectants.
- Do not spray water directly on dispenser for cleaning. Please clean dispenser and its water tank with a clean damp cloth. Do not use disinfectants for cleaning.
- If the power cable is damaged, it must be replaced by designated manufacturer, its service agent or professional technicians to ensure safety.
- Do not consume boiling water in rubber containers.
- When the bottom tray is full, remove it gently, pour water out and place the tray back in accordingly.

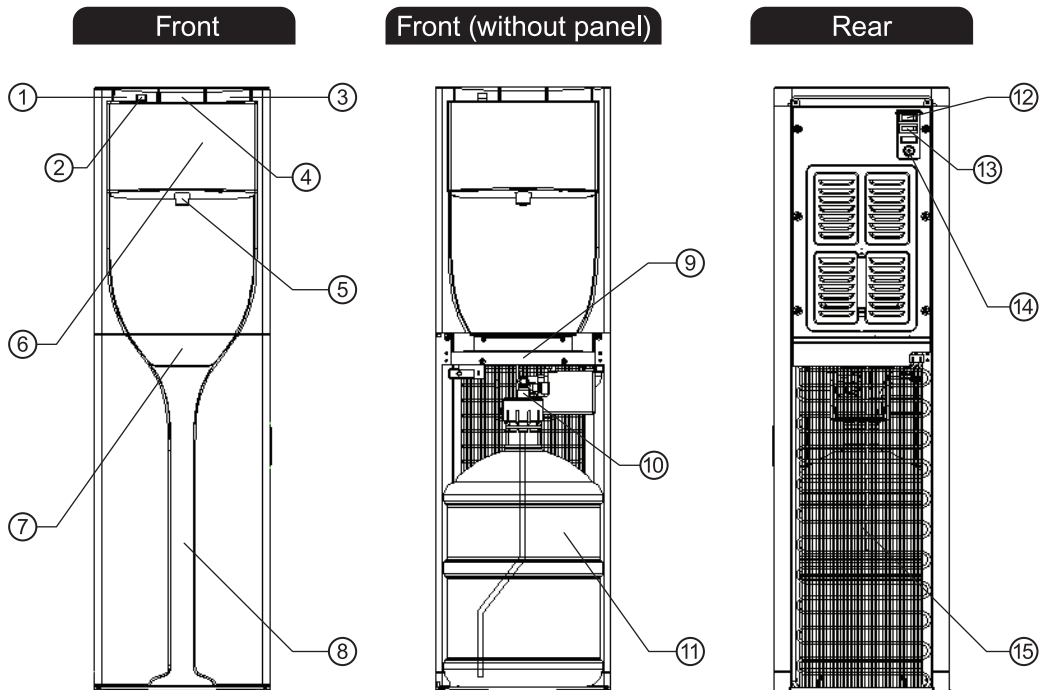
**⚠ CAUTION:** Disconnect the power supply during cleaning or inspection to avoid electric shocks.

**⚠ WARNING:** The appliance is not to be used by children, or seniors with reduced physical, sensory or mental capabilities, or lack of experience in operating dispenser, unless they have been given supervision or instruction of using the appliance by a person who is responsible for their safety.

**⚠ WARNING:** Children should be supervised not to play with the appliance that may cause damage or accident.

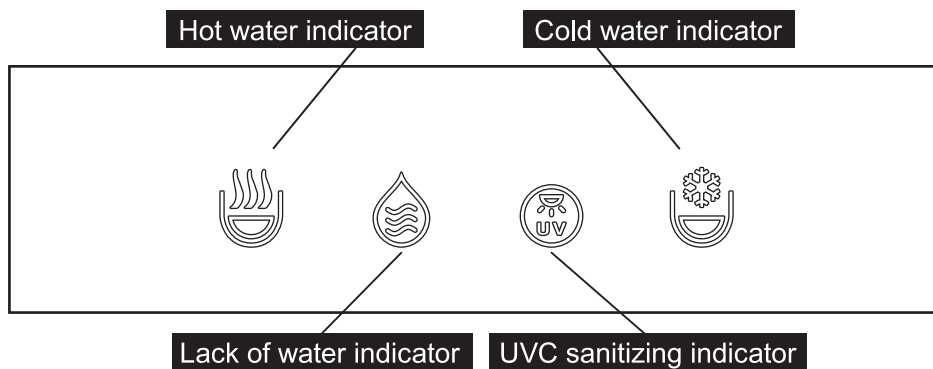
**⚠ WARNING:** This appliance can only be used with fixed and suitable power supplies. Do not use with extension cords to prevent fire caused by overloading.

## Structure and Parts



1	Hot water button	2	Anti-scald button	3	Cold water button	4	Cool water button	5	Water spout
6	LED Ultra-Violet sanitizing light	7	Water container (with lid)	8	Bottle panel	9	Middle socket	10	Interim pumping rod
11	Carboy bottle (not included)	12	Heating switch	13	Refrigerating switch	14	Fuse	15	Condenser

## Display Panel



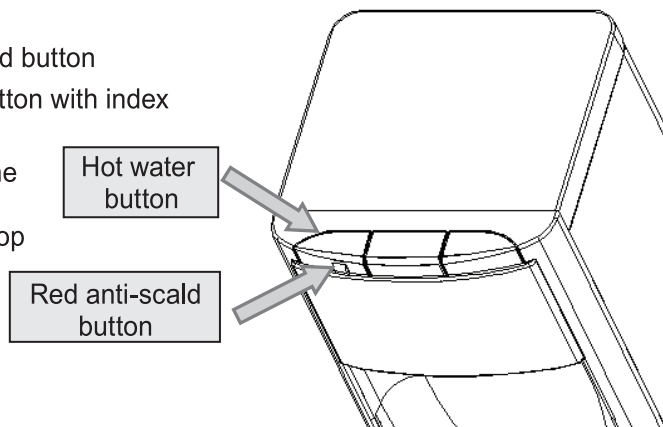
## Operating Instructions

### Press button 1 Children safety lock (hot water button usage)

In order to prevent children from scalding, the hot water button is equipped with a children safety lock.

Operating procedures:

- ① Press the red anti-scald button
- ② Press the hot water button with index or middle finger
- ③ Release button after the cup contains sufficient water. Hot water will stop pouring out while the safety lock resumes.



## Functionalities

### Function 1 Heating and display

Turn on the red heating switch at the rear of the dispenser upon plugging into power source. Heating display blinks during the process and glows upon completion. Heating will take around 20 minutes with supply of hot water and will activate when water temperature drops below the keep warm range.

### Function 2 Refrigerating and display

Turn on the green refrigerating switch the rear of the dispenser upon plugging into power source, cool water under 10°C will be available in around 40 minutes. Refrigerating display blinks during the process and glows upon completion. Refrigeration is activated when water temperature rises above the keep cool range.

### Function 3 Lack of water display

The lack of water green indicator glows during normal operation and will blink in red light when water is reaching low level for reminder of changing another bottle.

### Function 4 UVC sanitizing and display

After the power is turned on, the UVC LED lamp will sterilize for 20 minutes, UVC sanitizing indicator glows during sanitization and goes off upon completion, then standby for 160 minutes, and re-run it again. If the UVC LED lamp is in the standby state, when pressing the water button, it will activate the UVC sterilization for 20 minutes, then standby for 160 minutes again, and continue to re-run this mode.

## Dispenser Usage Instructions

- ① Take out the dispenser from its original packaging and place it on a stable and plane surface in an appropriate location. Distance between the rear of the dispenser and walls around should be 15 cm or more.
- ② Remove the plastic bottle seal.
- ③ Remove bottle cap packaging.

**Must not remove the white bottle cap**
- ④ Open the bottom panel and remove the packaging of the steel water pipe.
- ⑤ Ensure the steel water pipe is placed within the water bottle.
- ⑥ Place the water bottle into the dispenser lower cabinet and close the bottle panel.
- ⑦ The water pump will start operating after the power cable is plugged in. Wait about 3 minutes and press the hot water, cool water and cold water button to see if the water flow appears smooth, the heating and refrigerating switches at the rear of the dispenser can be turned on (do not consume the first two cups of water due to sanitary reasons).
- ⑧ Wait about 40 minutes and drinking cold and hot water.

## First-Time Installation Procedures

### Precaution

Press the hot water button after plugging the power cable and turn on the heating switch after water can be released from the spout.

**Precaution:** If the dispenser is connected to the power source without water, the heat tank will burn up to draught and cause damage to the thermostat and dispenser malfunction.

① Dispenser ② Water may be delivered separately. Please install both ① and ② are available.



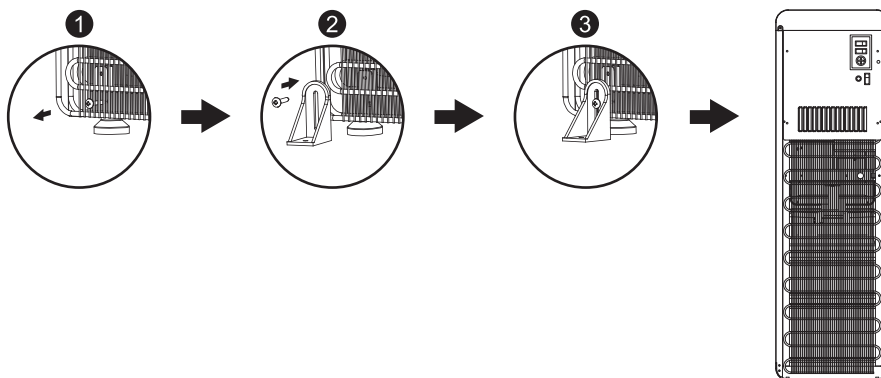
## Stability Anchor Installation

Description	Stability Anchors	Fixing Screw and Line Plug
Quantity	2	2

### Installation :

- ❶ Please remove the screws from the lower condenser of the dispenser.
- ❷ Fix the stability anchors on two sides of the back of the dispenser.
- ❸ Fix the dispenser on levelled ground with Fixing Screw and Line Plug.

Please keep a distance between the water dispenser and surrounding at least 15cm.



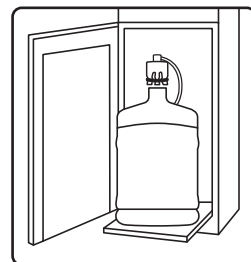
## Water Bottle Replacement Instructions

1. Place water bottle next to dispenser bottom panel and remove the plastic bottle seal.
2. Remove bottle cap packaging.
3. Open the dispenser bottom panel.
4. Remove the existing water bottle gently from the dispenser.

Caution: Remove the plastic bag around the steel water pipe during first-time installation.

5. Pull upward to release the (steel water pipe) from water bottle.
6. Open the piston cover of the bottle cap with the steel water pipe.  
(open the white piston cover). Caution: No need remove the bottle cap.

7. Put the steel water pipe inside the bottle.
8. Ensure the bottle cap has been closed tightly.
9. Lift the water bottle and place it on the edge of the dispenser bottom basin.



10. Push the water bottle into the dispenser gently.

11. Close the dispenser bottom panel and the water pump of the dispenser will automatically start the water pumping.

Caution: The dispenser will not operate if panel is not shut completely (pumping will not be activate) and water pump operation will terminate automatically within 50 seconds. If the lack of water indicator glows, open the panel, then shut it properly and the water pump will function again.

## Carboy Water Bottle Replacement Precaution

- Remove the interim pumping rod and put it in the carboy water bottle, then push the water bottle into the dispenser and close the panel.
- Need not switch off the dispenser and heating switch during the replacement process.

## Product Specification

Model	HC90L-UFD		
Dimensions	Length 320 mm	Material	Heat tank/SUS304
	Width 300 mm		Front plate/ABS
	Height 1040 mm		Side plate/cold rolled plate
		Refrigerant	Faucet/PP
		Heating	R134a
Rated Refrigerating Power Output	85W	Cold Water Flow Rate	Tubular electrical heating
		Cool Water Flow Rate	2.4L/min, Capacity 2.9L
Rated Heating Power Output	500W	Hot Water Flow Rate	2.3L/min, Capacity 2.9L
			1.5L/min, Capacity 1.9L
Voltage	AC220V/50Hz	Water Temperature*	Cold water 5 - 10°C /
Refrigeration	Refrigerant compressor		Cool water 10 - 25°C /
			Hot water 85 - 88°C

\*Remark: Water temperature is subject to usage pattern and environmental factors.

## Troubleshooting

Please confirm the following before requesting maintenance service.

Issue	Scenario	Troubleshooting
Dispenser not connected to power source	● No power	● Check whether power cable is plugged in properly
	● Temperature control in protection mode	● Schedule for inspection by professional technician
	● Built-in wires are loose	
Unable to release water upon pressing specific buttons	● Dispenser in children safety lock mode	● Check whether the children safety lock indicator glows and unlock
	● Circuit malfunctioning	● Schedule for inspection by professional technician
No water or low water flow	● Dirt blocks spout	● Remove dirt, inspect water tank and spout
Low temperature	● Dispenser is unplugged Front indicators (hot and cold water indicators are dimmed)	● Plug the dispenser
	● Refrigerating and heating switches are off	● Turn on refrigerating and heating switches
	● Fuse damage	● Fuse replacement ※Contact customer service
	● Dispenser panel is not shut	● Shut the dispenser panel
	● Too much dirt/circuit malfunction	● Remove dirt/schedule for maintenance service
	● Voltage malfunction	● Contact professional technician for voltage inspection
Water leakage ※Unplug upon leakage	● Damage of carboy water bottle ※Contact customer service	● Replace carboy water bottle
Water leakage around dispenser	● Water leaks from dispenser ※Contact customer service	● Release water from dispenser bottom plate
Water leaks from dispenser (water leaks from bottom of dispenser)	● Hot, cool and cold water buttons are blocked and cannot resume to normal positions	● Remove blocking objects from hot, cool and cold water buttons and check whether they can be resumed
Water leaks from dispenser bottom plate		

Please contact Hong Kong customer service at (852) 2660 6688 or Macau customer service at (853) 2857 3088 or visit Watsons Water's Website [www.watsons-water.com](http://www.watsons-water.com) for inquiries.

## Warranty and Maintenance

- Watsons Water provides 12-month free warranty guarantee maintenance effective upon the day the product is received. Customers will be charged for component replacements after the warranty period and it is recommended to retain all receipts as proof.
- Please make appointment via our Hong Kong customer service at (852) 2660 6688 or Macau customer service at (853) 2857 3088 if maintenance service is needed.
- The following are excluded from free maintenance within the warranty period:
  1. Damages caused by failure of following operating and maintenance procedures listed in product user manual.
  2. Alternation or dissembling dispenser.
  3. Damages caused by users (pump water in high temperature into water tank, heat up other drinks in dispenser or collapse of dispenser from tall plane surface, etc.)
  4. Force Majeure situations, such as fire, floods, earthquake, thundering, etc.
  5. Damages caused not because of product quality.
  6. Watsons Water is not responsible for any misuse, damages in purpose and dislocation of products or damages caused by failure of following proper guidelines during product installation, sanitization, maintenance and accidents.
- The Company shall retain the copy right of this user manual and related discretions.

## Maintenance

Please turn off the heating switch and unplug before maintenance.

- Do not soak the dispenser in water or spray the dispenser directly.

### Around the Spout

Use a clean damp cloth or slight wet tissue paper to clean dust around spout. If there is much dirt around, please use standard detergents with alcohol contents to sanitize.

### Water Container and Lid

Lift upward and take the water container out (please clean with mild detergent and rinse with water).

### Dispenser Surface

Please use a clean cloth or dry towel to remove dirt, then use a wet sponge or soft cloth to wipe the dispenser surface (clean with mild detergent and wipe thoroughly if dirt remains).

### Dispenser Rear

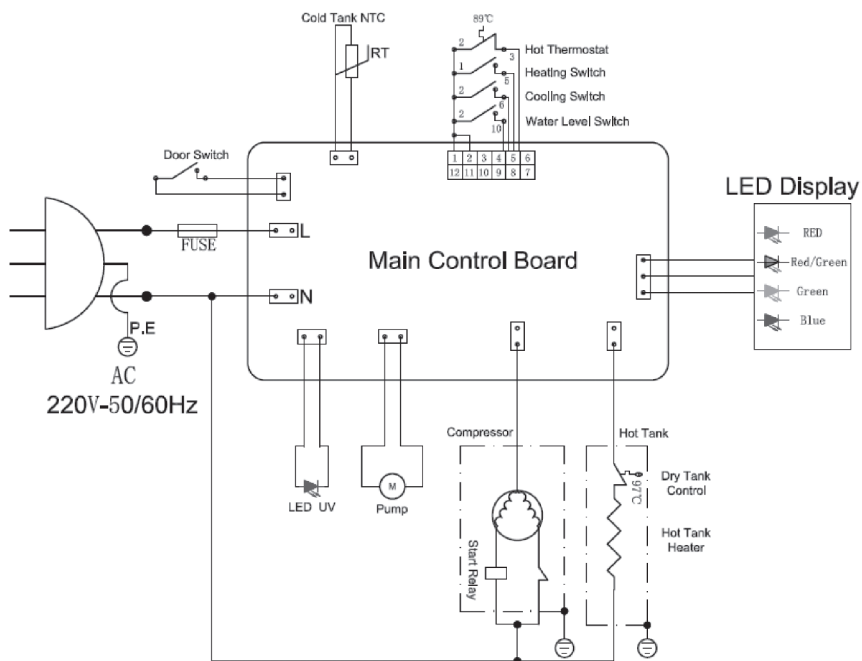
Vacuum the dust on dispenser rear with a vacuum cleaner, and then wipe with a wet soft cloth.

- Unplug the dispenser before wiping to avoid scald.

### Dispenser Sanitization Service

In order to enjoy the best quality water, it is recommended to sanitize the dispenser once every 3 months. Please contact Hong Kong customer service at (852) 2660 6688 or Macau customer service at (853) 2857 3088 for inquiries.

## Circuit Diagram



## Marking Label

### 注意 Attention ⚠

- ① 兒童須由成人陪同方可使用此水機。  
Children should be accompanied by adults when using this dispenser.
- ② 如需要更換蒸餾水水樽或改變水機擺放位置，請參照使用指南指示。  
Please follow the instruction manual before replacing water bottle or relocating the dispenser.
- ③ 倘遇操作故障，請勿自行修理。請關掉電源並致電熱線安排公司認可人員進行維修。  
Should the dispenser encounters any technical problem and requires maintenance service, it must be tackled by the company qualified technician. Please disconnect the power source and call for service.

### HC90L-UFD Upward LED UVC H&C Water Dispenser

MODEL: HC90L-UFD	SERIAL NO: ACYYYYMMDDXXX
POWER VOLTAGE: 220 V	MADE IN CHINA
FREQUENCY: 50 Hz	DISTRIBUTED BY: Watsons Water
NET WEIGHT: 15kg	TOTAL RATED POWER: 585 W
DIMENSIONS: 1040(H) x 300(W) x 320(D) mm	



客 戶 服 務 熱 線

Customer Service Hotline

**香港 Hong Kong : (852) 2660 6688**

**澳門 Macau : (853) 2857 3088**